



Monica Wills House

ST MONICA TRUST

50 Monica Wills House One bedroom second floor apartment



Bedminster, Bristol BS3 3NJ

£225,000 leasehold
(other charges apply)



St Monica Trust



APPROVED
OPERATOR



Monica Wills House

ST MONICA TRUST

50 Monica Wills House

Bedminster, Bristol BS3 3NJ



Roof top garden

Specification

- North east facing, located on the second floor with views towards Windmill Hill
- Living room with patio doors leading to a balcony
- Bedroom with storage and ensuite shower room
- Shower room, also has access to hallway
- Kitchen with extractor fan, hob and eye level oven and space for fridge/freezer and washing machine. Opening onto balcony
- Hallway with storage
- Constructed in 2006



Typical Kitchen



Resident's Coffee Lounge

Service charge

£5,982 single person per annum

£7,328 couple per annum

Viewings

Please call the sales team
to book on **0117 949 4004**

Council tax

Council Tax Band A

£1,809.12 per annum

EPC

Current EPC Band C (Rating 74)

Potential EPC Band B (Rating 86)

Please note

This apartment is sold unfurnished. Dimensions shown are maximum.

Certain particulars may vary, please check with our sales team. You may need to meet with the village manager as part of the allocations process.

This will be booked at a time convenient to you.

Ending your occupation of a property

When you surrender your lease the Trust will buy your property back and

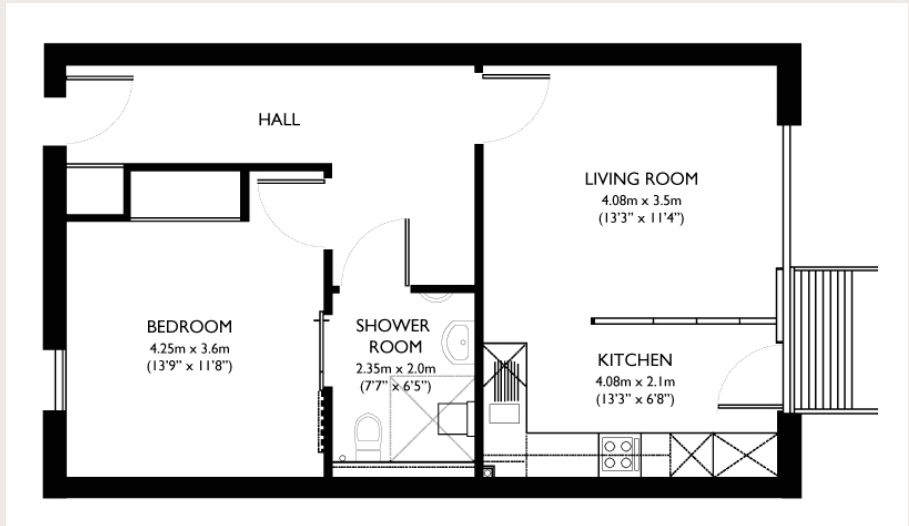
return to you the amount of your original capital payment less any outstanding charges and your surrender fee. Please refer to the Guide to Fees document for a worked example



Monica Wills House

ST MONICA TRUST

50 Monica Wills House Bedminster, Bristol BS3 3NJ



Living room

3.85m x 3.5m
12'6" x 11'4"

Kitchen

3.83m x 2.05m
12'5" x 6'7"

Bedroom I

3.85m x 3.8m
12'6" x 12'4"

Shower room

2.25m x 2.0m
7'3" x 6'5"

TOTAL AREA: 49 SQM

To unsubscribe please telephone
0117 949 4004 or email
sales.team@stmonicatrust.org.uk



St Monica Trust APPROVED
OPERATOR