



# CHARTERHOUSE



ST MONICA TRUST



LUXURIOUS SURROUNDINGS  
WITH PERSONALISED CARE  
KEYNSHAM, BETWEEN BRISTOL AND BATH



“St Monica Trust carers are  
incredible, compassionate, caring,  
willing and clearly well trained.”

**Lynette,**  
relative of resident



## WELCOME TO Charterhouse

Located within The Chocolate Quarter, Charterhouse care home combines the height of luxury with outstanding personalised care.

Elegantly styled and set in beautiful surroundings, we created Charterhouse as a new kind of care home. One that puts you at its heart. With delicious food prepared by first-class chefs and a selection of engaging activities, we look after more than your peace of mind.

# Designed with you in mind

Charterhouse is thoughtfully designed to ensure you receive dignified care that promotes your independence and enables you to live your life the way you want.



Elegantly styled communal spaces provide a place for socialising or quiet relaxation, while large kitchen and dining areas provide opportunities for enjoying good food and good company.

Roof gardens with water features create beautiful sanctuaries for you to explore. Furthermore, there are sheltered areas on every floor so that you can spend time outdoors, no matter what the weather.

We're passionate about your care and well-being. Our dedicated team of carers provide a personalised service for those in need of:

- Long term nursing
- Dementia care
- Respite care
- Rehabilitation care
- Palliative care
- Residential living



24 hour care



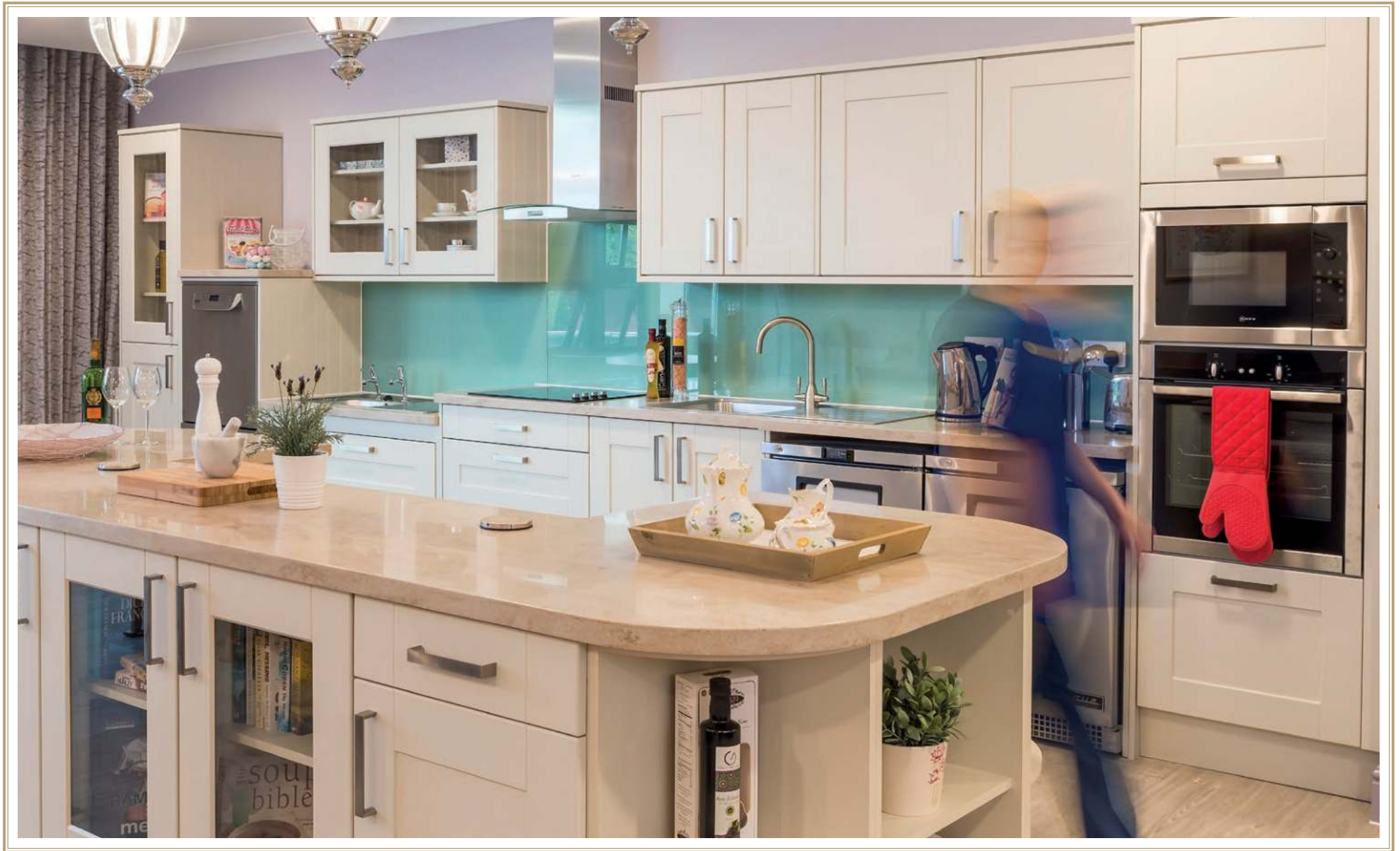
Physiotherapy



Large private suites



Private terraces  
and roof garden





# The heart of the community

Set in the beautiful countryside between Bristol and Bath and originally the home of Fry's Chocolate, The Chocolate Quarter is a vibrant community where residents enjoy a first rate lifestyle with a wealth of amenities. As a Charterhouse resident, you are invited to enjoy these facilities too.



From fine dining at the restaurant to pampering at the spa, everything is close at hand. Our care team will support and encourage you to join in with as much as possible, so that you always feel part of your wider surroundings.



Cinema



Nail salon



Restaurant



Gym



Café



Swimming pool



Barber shop



GP surgery



Hair salon



Physiotherapy

# Living in style

Every day at Charterhouse will be as comfortable as your first. Upon arrival, you will be welcomed into a calm and friendly environment and shown to your own personal suite, specified to the highest standards to ensure your comfort.

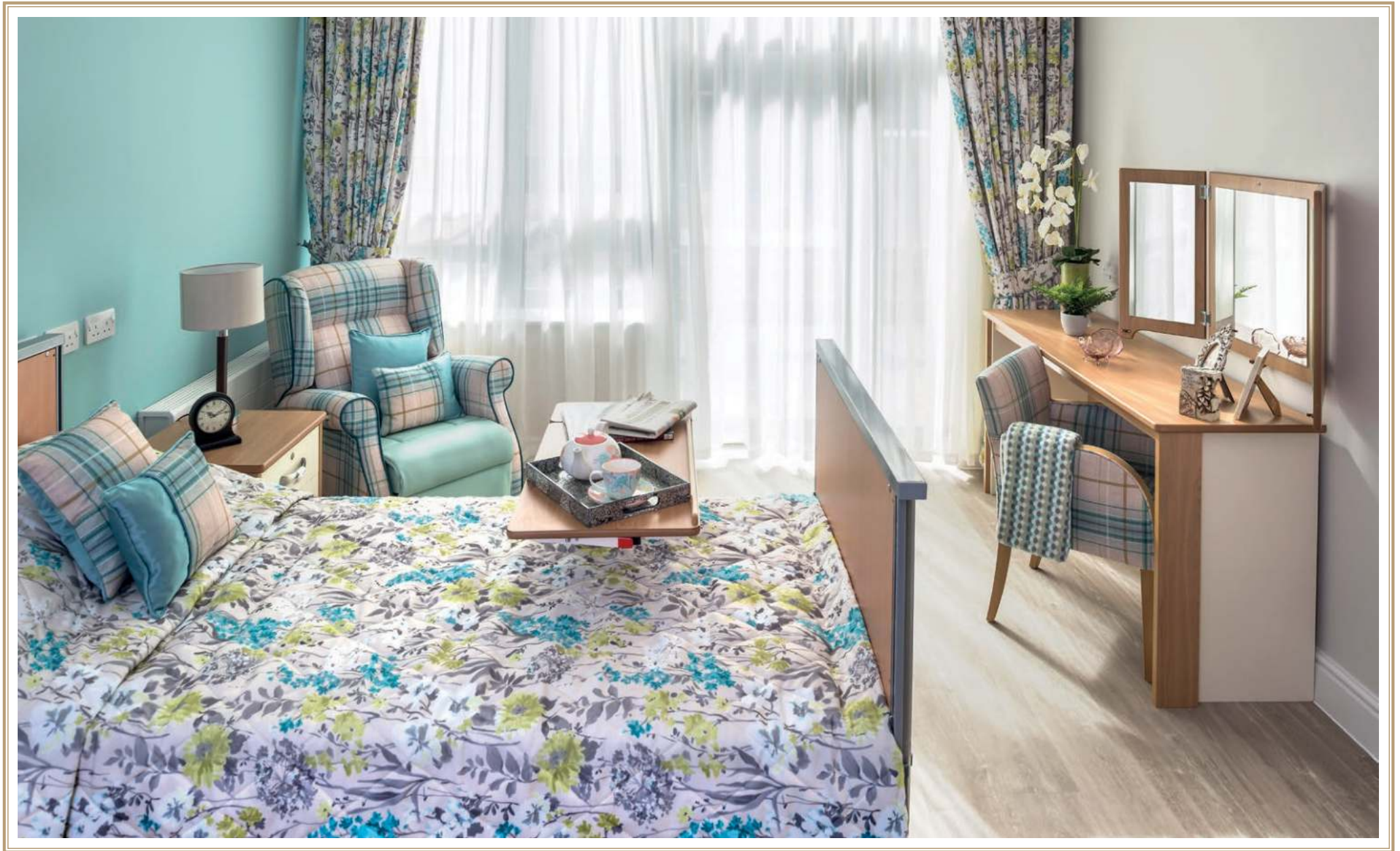



Full height windows bathe the rooms in natural light and show off their generous proportions. Each beautifully decorated suite is completed with furnishings which can be adapted to suit your personal taste.

Innovative design features make every day that little bit easier, such as motion sensors which turn on low-level lighting in the en-suite if you get up in the night. There's also the mattress that can be finely tuned for a perfect fit to ensure you get the best night's sleep.

-  Large private suites
-  Air conditioning
-  Wi-Fi
-  In-room dining
-  En-suite
-  Full height windows







“Staff are wonderful;  
caring, kind, patient and  
responsive to needs.”

Jill,  
relative of resident

# Our care

We are passionate about your comfort and what matters to you. We will take the time to get to know you and understand what you want. That way everything is done just how you like it. Our multi-skilled carers are supported by registered nurses to tailor the highest standard of care exactly to your needs.



Our in-house training team ensure that all our staff meet the St Monica Trust standards. You can be assured of the quality of care they provide and that they share our values.

The latest care technology has been discreetly incorporated into the fabric of Charterhouse. Innovations such as acoustic monitoring, combined with the latest call systems, work behind the scenes so that you can maintain your independence.




Because Charterhouse is part of the wider Chocolate Quarter, you can take advantage of all the other facilities within the community. This includes the on-site GP, the physiotherapy treatment rooms, swimming pool and spa.

# Making every day fun

Interesting pastimes are central to life at Charterhouse and there is plenty to get involved in. From gardening and excursions to musical sing-alongs, we will ensure there is something for you to do every day. If there's an activity you have in mind, or if you'd like to try something new, just let us know.



We understand that your interests extend beyond simply activities. We want to make sure you stay connected with what matters to you. Tablet computers and Wi-Fi across the site mean that you can message or video call friends and relatives at any time. You can even try new worlds of entertainment from our virtual reality suite. Revisit your favourite places, or discover new landmarks, all from the comfort of your armchair.

-  Arts and crafts room
-  Private terraces and roof garden
-  Swimming pool
-  Cinema
-  Tablet computers
-  Wi-Fi
-  Virtual reality suite
-  Outings



THIRTEEN



# Catering to your taste

Good food is an essential ingredient when it comes to living well. Let us know how you'd like us to prepare your meals and we'll create nutritious dishes that are just right for your dietary needs.



Our chefs are experts at producing delicious, restaurant quality meals using seasonal and locally sourced ingredients.

Dining at Charterhouse is about much more than food. Comfortable kitchens and dining areas mean that eating becomes a social occasion. What's more, you can join in preparing meals, if you wish, as well as making your own creations.

# Our care services

Everyone's needs are different and at Charterhouse we've tailored a range of options for care that is built around individual needs. That's one of the reasons why we've gained national recognition for high quality personalised care – and for the design of our accommodation.

## **Nursing care**

Over the years, we've learned how to work with individuals and their families to create care plans that carefully balance support alongside independent living, so that you maintain the freedom to make your own choices. That way you can be certain that we'll do all we can to ensure you get the best out of life every day.

## **Dementia care**

We believe that a key part of creating sensitive and pleasant environments for people who are living with dementia is the quality of the relationships that we build. By taking the time to really get to know people – their histories, their stories – we're able to respond sensitively, provide reassurance and encourage people to continue enjoying life.

## **Respite care**

Some people come to us for short periods of up to six weeks and because rooms can be booked in advance, you get to choose when you'd like to check in and check out. You can also take advantage of the restaurant and other facilities, or simply enjoy the peace and quiet of your own surroundings with staff on hand 24 hours a day.

## **Rehabilitation**

For those who want to get home as quickly as possible after a spell in hospital, Charterhouse is the perfect place to help you recover. Our team are experienced at helping you every step of the way and we know how to create restorative care plans, built around you. Using our fully equipped physiotherapy treatment rooms, combined with the expertise of our team of professionals, we'll help you to get back to your best.

## **End-of-life care**

We're recognised for providing sensitive and attentive palliative care, which encompasses all aspects of your physical, spiritual and emotional well-being. With an emphasis on working with both you and your loved ones, our highly trained staff are skilled at establishing meaningful relationships to make sure you're as comfortable as possible.

## **Residential living**

Some people still want the assistance and security that comes from living in a care home despite not needing nursing care. Charterhouse is an ideal location - our friendly team provide personal and practical support to make it easy for you to continue enjoying your life the way you want.





# Come and see for yourself

We'd love to show you more and our team are always on hand to help. To ask any questions, arrange a viewing or for more information, please call the Admissions team on **0117 949 4735** or email **[carehomes@stmonicastrust.org.uk](mailto:carehomes@stmonicastrust.org.uk)**.

## **Costs and funding**

The St Monica Trust has a policy of openness with regard to our fee structure and full details of our care costs are available upon request.

The Trust also employs a Citizens Advice Bureau case worker who can provide free and impartial advice on the funding of your care.

## **About us**

The St Monica Trust is a Bristol-based Charity with a reputation for providing high quality accommodation and innovative care for older and disabled people. Established by the Wills family in 1925, we have retirement communities and care homes across Bristol and North Somerset.

The Trust employs over 1,200 staff to ensure that we give the best support to more than 1,000 people.

## **Charterhouse**


The Chocolate Quarter,  
Trajectus Way,  
Keynsham,  
Bristol BS31 2GL

**[www.stmonicastrust.org.uk](http://www.stmonicastrust.org.uk)**

*Registered charity number 202151 | 5/18 | 3,000*

*Featured images may be from a variety of St Monica Trust sites.*

*Artist impression images may be subject to change.*



“The care and surroundings go  
beyond what we thought a care home  
would be like - it feels more like a hotel!”

**David R,**  
Husband of resident



To book a tour or find out more  
**0117 949 4735**



Setting Standards for  
Retirement Communities

