



# Monica Wills House

ST MONICA TRUST

AN URBAN RETIREMENT VILLAGE  
IN THE HEART OF SOUTH BRISTOL



“I feel very lucky to  
live here and to be  
so well looked after”

“Absolutely nothing to  
worry about at all”

Residents of Monica Wills House



## Welcome to Monica Wills House

Monica Wills House is an urban retirement community in the heart of South Bristol. Known for its vibrant and sociable atmosphere, Monica Wills House is a place where you can keep yourself busy from dawn to dusk. Become part of a friendly and welcoming community where you'll have the opportunity to expand your social circles and explore new interests and hobbies.

# Our approach

Across all of the Trust's retirement villages and care homes we are committed to **communities where older people flourish**. For us this means providing opportunities for our residents to enjoy treasured relationships, exercise choice and feel valued. We call these our three Cs - Connection, Contribution and Choice.



## **A not-for-profit organisation**

We are proud of our charitable status. It allows us to devote ourselves to our communities and residents rather than to shareholders. This means that people from many different backgrounds can access and benefit from what we do.

## **What makes us different**

Our aim is to achieve the highest standards in all that we do. Aside from offering purpose-built accommodation, you can enjoy great food in our restaurants, an interesting selection of activities and superb service from any member of our team.

With St Monica Trust you can look forward to retirement safe in the knowledge that all the essential details will have been taken care of.

Should your needs change in the future, our expertise in care provision means we can offer you a range of support services. Depending on your requirements, our care and support team can provide varying levels of assistance within your home. And should you want more involved care, our nursing homes provide professional, personalised care in sensitive and supportive environments.





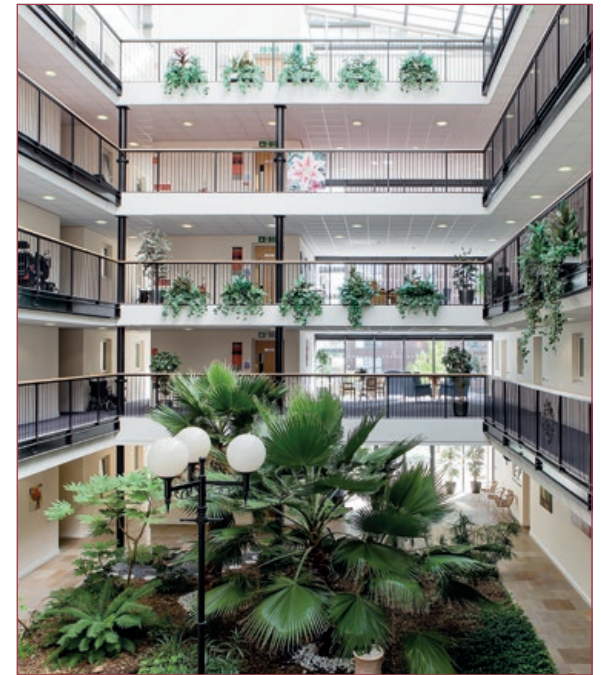
# Community living at its finest

Monica Wills House has been designed around a dramatic central atrium. Illuminated with natural light, the covered atrium acts as an indoor street and a place for residents to meet.

Across the site, enjoy a selection of purpose-built one and two bedroom apartments each with their own private balconies for safe and easy access to an outdoor space.

Each self-contained apartment has been created to blend practicality with ease of living. Well-proportioned kitchens and lounges are perfect for relaxing or entertaining family and friends; whilst spacious bedrooms offer the perfect environment for a good night's rest. Apartments are sold unfurnished, so you can still enjoy your cherished furniture, favourite armchair or comfortable bed.

Apartments at Monica Wills House are sold via the Trust's leasehold purchase scheme. For full details, including any additional charges and fees, please talk to our sales team or refer to the Key Facts document either accompanying this brochure or available from our website: [www.stmonicatrust.org.uk](http://www.stmonicatrust.org.uk)



# Enjoying life to the full

There's so much more to living at Monica Wills House than just your apartment. Step outside your front door and you will find a friendly, welcoming community enjoying a diverse programme of activities and entertainment.

Staying active and engaged in retirement has positive impacts on both body and mind, helping you stay healthy, energetic and independent as you get older. That's why at Monica Wills House we aim to offer a wide range of amenities and activities all organised by your dedicated village engagement coordinator.

If you enjoy keeping fit why not try a workout in the gym or move to the rhythm of Zumba? Practise deep breathing and relaxation at a Tai Chi class, or even 'yee haw' with your fellow residents at line dancing.

For those times when you prefer to be less active, try New Age Kurling, indoor bowls or a game of snooker under the sheltered cover of the atrium. Unleash your creativity in the arts and craft room, or just simply enjoy relaxing in the resident's lounge.

When the weather allows, the top of the building is the place to be. Unwind in Monica Wills House's award-winning rooftop garden and enjoy stunning views across Bristol. For the keen gardener, raised bed allotments are available so you can grow and tend to your own flowers and vegetables.

The fun doesn't stop when the sun goes down. Socialise with new friends over a drink in the Lounge Bar, at a themed evening or the popular 'takeaway nights' – when the call goes out to one of the local restaurants so residents can all enjoy a meal together.

Away from the activities, entertainment and social gatherings, there are also resident groups and the resident council so you can have your say and become involved with the running of the community.



Rooftop Garden



Hair Salon



Library



Gym/Studio



Resident Lounges



Arts and Crafts



Shopping Trips







# Passionate about food

Our chefs are passionate about the delicious meals they create and serve on a daily basis. Their strong belief in the importance of nutritious, interesting and varied menus can be experienced in the restaurant at Monica Wills House.

If you don't fancy cooking in your own apartment, then why not enjoy some delicious food in the licensed restaurant? And when the weather is better, you can dine al fresco on the terrace.

The catering team are very happy to accommodate individual requests and work closely with residents to create the menus. If you would like to enjoy a meal with family or friends, this can be easily arranged. And should you have a special occasion you wish to celebrate in style, let the team know and they'll be happy to work with you to ensure the event is a success.



# Bright lights, big city

Located in Bedminster on the south side of the city, Monica Wills House is ideally positioned to enjoy the hustle and bustle of urban living from the eclectic local area to the historic harbourside running through the centre of Bristol.



Bedminster and its neighbour Southville have undergone massive regeneration over the past decade or so. Traditional high street shops and supermarkets now sit alongside independent retailers, cafés, bars and restaurants.

Explore the area further and you'll find theatre, comedy and performing arts at the Tobacco Factory, contemporary art galleries, tranquil local parks and much more. For the sports fans, Ashton Gate stadium is only a mile away where you can follow the highs and lows of the local professional football and rugby teams. Many buildings in Bedminster have been painted by some of the world's best street artists. This splash of colour is the perfect backdrop for this unique and vibrant area of Bristol.

Take the bus from the stop outside of Monica Wills House and within 15 mins you'll be in the centre of the city. Renowned for its harbourside attractions, museums, art galleries, theatres, music and festivals. Bristol is also celebrated for its excellent multicultural food scene, with restaurants catering for every type of taste imaginable.

Whether it's shopping for a special gift; trying a new restaurant; exploring the harbourside, or enjoying a night of music or theatre, Bristol has its own unique, unmistakable identity.

Monica Wills House has excellent transport links with buses stopping right outside which will take you directly into the centre of the city. For travel further afield the motorway network is just 3 miles away, offering easy access to the Midlands, London, the South West and Wales. Trains to all parts of the UK run from the mainline train station at Bristol Temple Meads. And for travel to Europe and beyond, Bristol International Airport is 7 miles away and easily accessible by the airport flyer bus that stops just a few minutes' walk from Monica Wills House.



# Safe, secure and stress-free

Everything at Monica Wills House is designed to make enjoying life as easy as possible. Relax and focus on what matters to you, knowing there are a host of services available to help eliminate the stresses and strains of everyday life.

## **Safe and sound**

One of the key benefits of living in a retirement community is the feeling of security. Door entry systems, CCTV and staff on-site 24 hours a day all help to make everyone feel safe and secure. If you're away from your home these same systems will give you peace of mind as you enjoy a holiday or visit family. Every apartment is also fitted with a discreet emergency call system to protect residents' well-being on a daily basis.

## **Clean and tidy**

Our team of housekeepers can clean your home for you and if you'd like your laundry done, we can take care of that too. Half an hour of housekeeping is included each week, but additional help is available if required.



## **Inside and out**

Our estates team ensure Monica Wills House remains immaculate and well-maintained. Should you encounter any problems within your apartment these can be easily notified so repairs can take place. And if you'd like help with any odd jobs around the home such as fixing shelves, hanging pictures or moving large deliveries just let the team know.

*Please note: some services may incur additional charges.*

# A caring and supportive community

Staying independent in later life is important for everyone, but there may be occasions when you need a little help and assistance around the home.

## Care and support

Whether it's helping around your home or more complex needs, our care and support team offer a flexible service, tailored to your exact requirements. And because we train and look after our own staff you can be sure your carer is friendly, dedicated and experienced.

## Longer-term care

Care and compassion are at the heart of everything we do. It's been that way for over 100 years and is the reason why we're well known and respected for the quality of care we provide. St Monica Trust operates a number of care homes across Bristol, Bath and North East Somerset (BANES) and North Somerset.

Within these homes we offer a range of personalised care plans, including nursing,



residential and respite care, together with specialist care for people living with dementia. So if a time came when you needed longer-term care, you can be reassured that options are available within the wider family at St Monica Trust.

## Spiritual well-being

Spiritual well-being is important for many residents and is supported by St Monica Trust's own chaplain and pastoral care team. Available for all, regardless of faith, belief or religion, the team arrange opportunities for regular worship. Together with the management team and village engagement coordinator, they play a pivotal role within the community ensuring everybody's well-being is being enriched and nurtured.

The pastoral care team can also offer emotional support during difficult or challenging times. Listening, comforting and supporting both residents and their family members.

*Please note: some services may incur additional charges.*





# Welcoming change

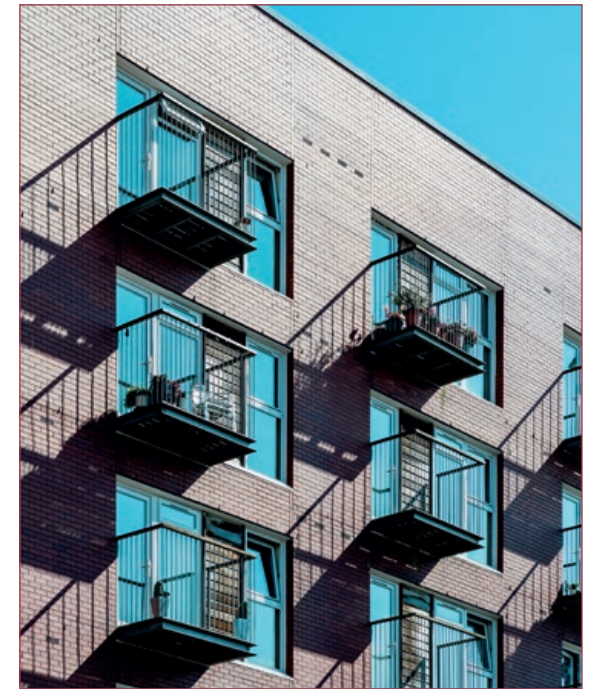
Monica Wills House was opened in 2006 on the site of the former Mail Marketing building in Bedminster. It forms an integral part of a wider development of housing and retail units that helped kick-start the rejuvenation of the area.

Bedminster, however, is not unfamiliar to change as its industrial history shows. Coal mining was first recorded in the area from the 17th century and by the 1820s over a dozen pits were scattered across the area, exploiting not only the coal seams but also the easy access to Bristol docks for quick transportation of the mined coal. Towards the end of the 19th century, the pits were becoming uneconomical and started to close down. Dean Lane, the largest of the Bedminster mines, was the last to shut in 1906. Few signs of the coal mining remain today, but one nod to this part of Bedminster's past is visible by the entrance to Monica Wills House, the 'Jolly Colliers' public house.

In the 1880s, with the coal mines in decline, Bedminster became home to two new large

employers: E.S. & A. Robinson (paper, printing and packaging) and W.D. & H.O. Wills (tobacco products). Even though the businesses have left, their imposing red brick buildings remain as testament to Bedminster's past. Part of the former Robinson building is now the headquarters of Cameron Balloons, the world's largest manufacturer of hot-air balloons, whilst the most famous of the remaining Wills buildings is the old 'Number 3 Factory' which is now home to the Tobacco Factory, a multi-purpose building housing a lively café bar, farmers' market and theatre.

In an area that has seen many changes over the years, it's fitting that Monica Wills House is carrying on this tradition by warmly welcoming new residents as they begin a new part on their life's journey.



# Come and find out more

We'd love to tell you more about Monica Wills House and our sales teams are available to answer any questions. They also run regular tours so you can explore the apartments and experience life at Monica Wills House for yourself.

To find out more please call **0117 949 4004**, email **[sales.team@stmonicastrust.org.uk](mailto:sales.team@stmonicastrust.org.uk)** or visit **[www.stmonicastrust.org.uk](http://www.stmonicastrust.org.uk)**

**Facebook** [@stmonicastrust](https://www.facebook.com/stmonicastrust)

**Twitter** [@St\\_Monica\\_Trust](https://twitter.com/St_Monica_Trust)

## **Monica Wills House**

Cromwell Street, Bedminster,  
Bristol, BS3 3NH

## **Head office**

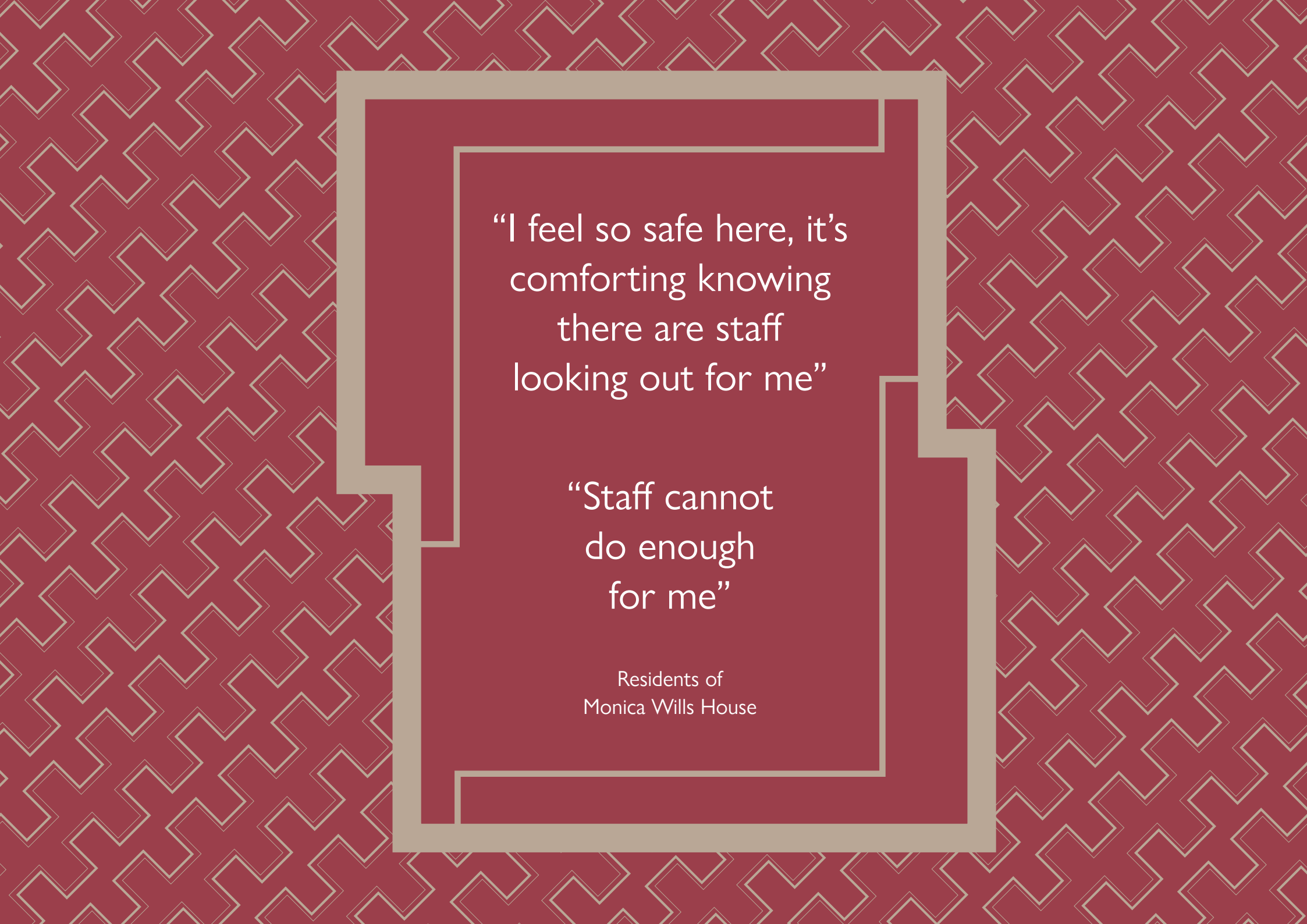
St Monica Trust  
Cote Lane, Westbury-on-Trym,  
Bristol, BS9 3UN

**[www.stmonicastrust.org.uk](http://www.stmonicastrust.org.uk)**

*Registered charity number 202151*

*3/24 | 250*

*Some featured images may be from a variety of St Monica Trust sites.*



“I feel so safe here, it’s  
comforting knowing  
there are staff  
looking out for me”

“Staff cannot  
do enough  
for me”

Residents of  
Monica Wills House



St Monica Trust

---

To book a tour or find out more call  
**0117 949 4004**

