



Cote Lane

ST MONICA TRUST

I Oatley House

One bedroom ground floor apartment



Cote Lane, Bristol BS9 3TN

£415,000 leasehold
(other charges apply)



St Monica Trust



APPROVED
OPERATOR



Cote Lane
ST MONICA TRUST

I Oatley House

Cote Lane, Bristol BS9 3TN



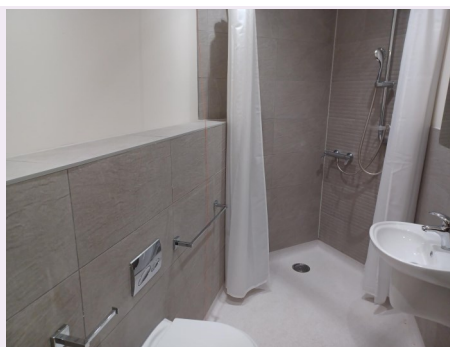
Parkland grounds

Specification

- South west facing located on the ground floor close to Oatley House main entrance and restaurant
- Sunny living room overlooking gardens
- Spacious bedroom with garden views
- Kitchen with eye level oven, hob, extractor fan with garden views
- Newly refurbished
- Available early 2024
- Constructed in 1920



Kitchen



Shower room

Fees & EPC

£10,008 single person pa

£12,824 couple pa

Council Tax Band D £2,345.24 pa

Current EPC Band C (Rating 70)

Potential EPC Band C (Rating 78)

Viewings

Please call the sales team
to book **0117 949 4004**

Please note

This apartment is sold unfurnished. Dimensions shown are maximum. Certain particulars may vary, please check with our sales team.

St Monica Trust buys back all properties at the end of each ownership period.

The seller receives back the original purchase price after deducting a reinstatement charge and any outstanding charges. The reinstatement charge covers the costs of putting the apartment back into an 'as new' condition. The cost of the reinstatement varies from £3,000 to

£10,000 dependent on the size of the apartment and the level of redecoration required.

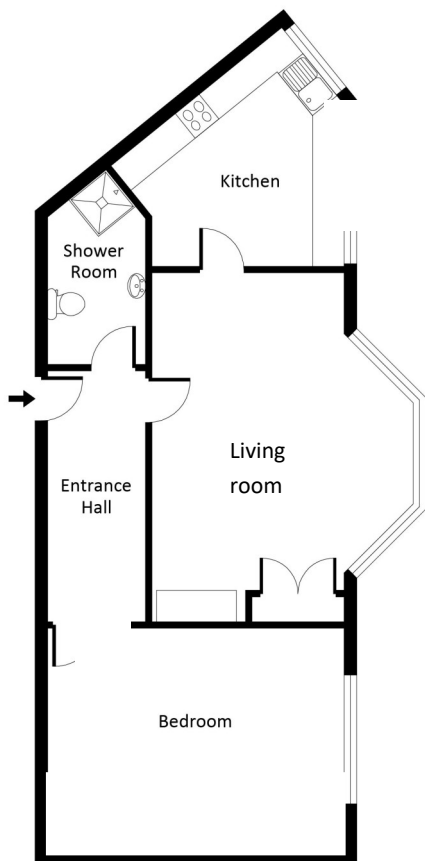
You may need to meet with the Village Manager as part of the allocations process. This will be booked at a time convenient to you.



Cote Lane
ST MONICA TRUST

I Oatley House

Cote Lane, Bristol BS9 3TN



Living room

5.7m x 4.9m

18'8" x 15'11"

Bedroom

5.70m x 4.90m

18'8" x 15'11"

Kitchen

2.70m x 2.50m

18'8" x 15'11"

Shower room

2.70m x 1.80m

8'9" x 8'2"

TOTAL AREA: 73 SQM

To unsubscribe please telephone
0117 949 4004 or email
sales.team@stmonicastrust.org.uk



St Monica Trust **APPROVED
OPERATOR**

