



Westbury Fields

ST MONICA TRUST

10 Jessop Crescent

Two bedroom duplex apartment with balcony



Westbury on Trym, Bristol BS10 6TQ

£405,000 leasehold
(other charges apply)



St Monica Trust



APPROVED
OPERATOR



Westbury Fields
ST MONICA TRUST

10 Jessop Crescent

Westbury on Trym, Bristol BS10 6TQ



Specification

- South east facing apartment located on the first floor
- Ground floor entrance with staircase/stairlift leading to first floor apartment
- Living room with balcony overlooking the cricket ground
- Main bedroom with storage and cricket ground views
- Spacious attic bedroom
- Modern kitchen with extractor fan, hob and eye level oven, fridge/ freezer, washing machine and dishwasher
- Updated shower room
- Landing with storage
- Constructed in 2003, to be refurbished in 2024

Awaiting grant of probate



Shower room



Kitchen

Community fees

£10,349 single person per annum
£13,988 couple per annum

Viewings

Please call the sales team
to book on **0117 949 4004**

Council tax

Council Tax Band C
£2,186.95 per annum

EPC

Current EPC Band C (Rating 74)
Potential EPC Band C (Rating 76)

Please note

This apartment is sold unfurnished. Dimensions shown are maximum. Certain particulars may vary, please check with our sales team.

St Monica Trust buys back all properties at the end of each ownership period.

The seller receives back the original purchase price after deducting a reinstatement charge and any outstanding charges. The reinstatement charge covers the costs of putting the apartment back into an 'as new' condition. The cost of the reinstatement varies from £3,000 to

£10,000 dependent on the size of the apartment and the level of redecoration required.

If you express an interest you may need to meet with the Village Manager immediately after your viewing appointment.

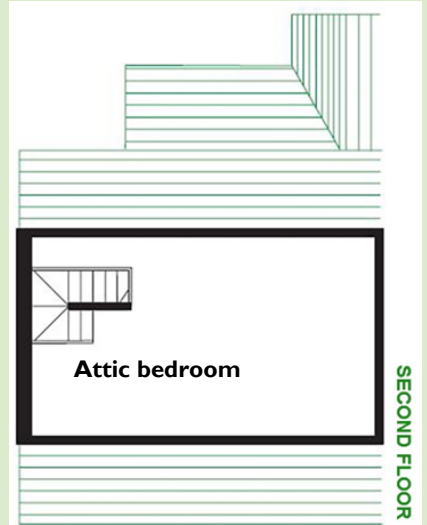
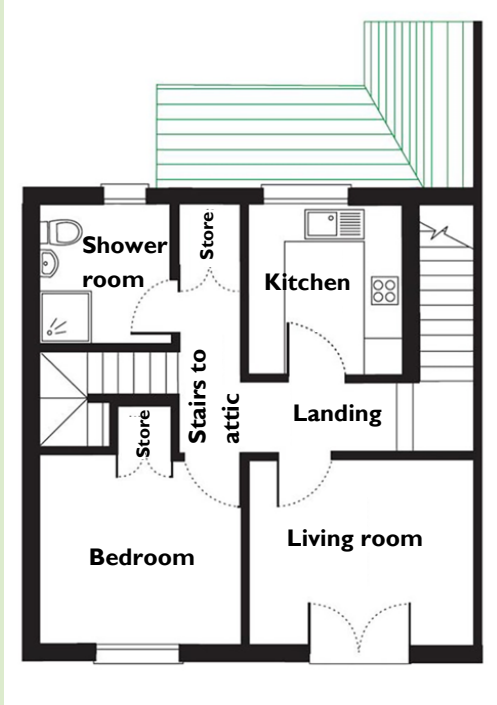


Westbury Fields

ST MONICA TRUST

10 Jessop Crescent

Westbury on Trym, Bristol BI0 6TQ



TOTAL AREA: 75 SQM

Living room
3.72m x 3.00m
12'2" x 9'10"

Kitchen
2.51m x 2.39m
8'2" x 7'10"

Bedroom
3.40m x 3.30m
11'2" x 10'10"

Shower room
2.20m x 2.17m
7'2" x 7'1"

Attic bedroom
6.90m x 5.00m
22'7" x 16'5"

To unsubscribe please telephone
0117 949 4004 or email
sales.team@stmonicastrust.org.uk



St Monica Trust **APPROVED OPERATOR**

