



Cote Lane

ST MONICA TRUST

## 14 Oatley House

One bedroom upper ground apartment  
with views



Cote Lane, Bristol BS9 3TN

**£420,000 leasehold**  
(other charges apply)



St Monica Trust



APPROVED  
OPERATOR



Cote Lane  
ST MONICA TRUST

# 14 Oatley House

Cote Lane, Bristol BS9 3TN



**View from apartment**

## Specification

- South west facing apartment with garden views
- Sunny living room with large windows
- Bedroom overlooking gardens
- Modern kitchen with hob, extractor fan and eye level oven
- Modern shower room
- Shared ownership option available
- Awaiting grant of probate
- Lift access to apartment
- Constructed in 1925



**Kitchen**



**Shower room**

## Fee and EPC

---

£10,008 single person pa

£12,824 couple pa

*Rates are for 2023/24*

Council Tax Band D £2,345.24 pa

Current EPC Band C (Rating 79)

Potential EPC Band B (Rating 84)

## Viewings

---

Please call the sales team  
to book **0117 949 4004**

### **Please note**

This apartment is sold unfurnished. Dimensions shown are maximum. Certain particulars may vary, please check with our sales team.

St Monica Trust buys back all properties at the end of each ownership period.

The seller receives back the original purchase price after deducting a reinstatement charge and any outstanding charges. The reinstatement charge covers the costs of putting the apartment back into an 'as new' condition. The cost of the reinstatement varies from £3,000 to

£10,000 dependent on the size of the apartment and the level of redecoration required.

If you express an interest you may need to meet with the Village Manager immediately after your viewing appointment.

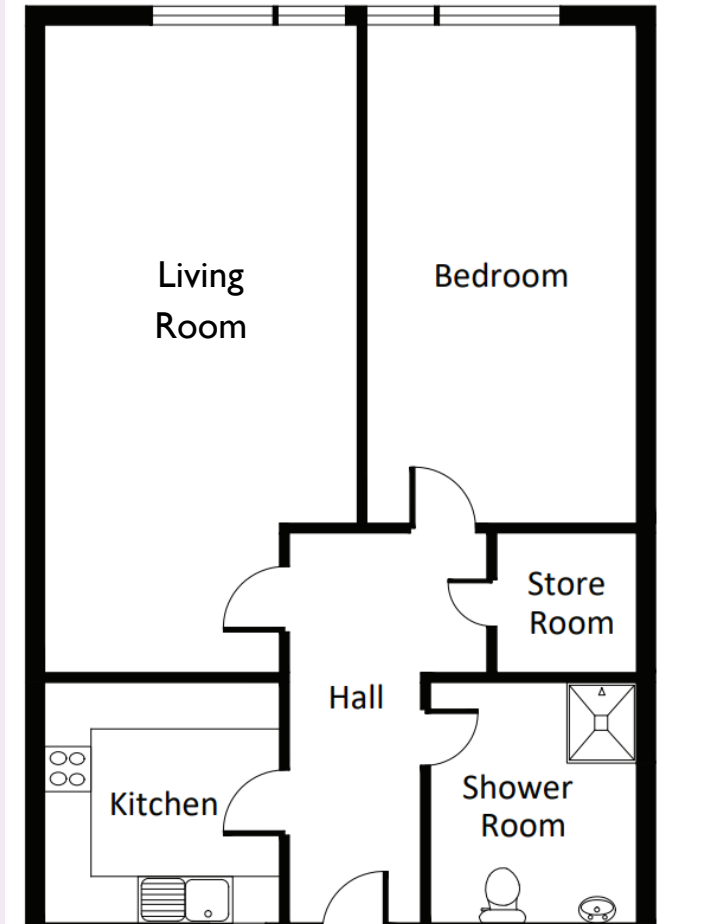


Cote Lane

ST MONICA TRUST

# 14 Oatley House

Cote Lane, Bristol BS9 3TN



## Living Room

6.94m x 2.93m

22'9" x 9'7"

## Bedroom

5.34m x 2.89m

17'6" x 9'6"

## Kitchen

2.58m x 2.52m

8'6" x 8'3"

**TOTAL AREA: 74 SQM**

To unsubscribe please telephone  
**0117 949 4004** or email  
**[sales.team@stmonicastrust.org.uk](mailto:sales.team@stmonicastrust.org.uk)**



St Monica Trust **APPROVED  
OPERATOR**

