



Cote Lane

ST MONICA TRUST

## 16 Oatley House

### One bedroom apartment



Cote Lane, Bristol BS9 3TN

**£450,000 leasehold**  
(other charges apply)



St Monica Trust



APPROVED  
OPERATOR



Cote Lane  
ST MONICA TRUST

# 16 Oatley House

Cote Lane, Bristol BS9 3TN



View from apartment

## Specification

---

- Constructed in 1920
- To be redecorated in 2023
- South facing living room with floor to ceiling windows with lovely garden views
- Good size bedroom with garden views
- Modern kitchen with fridge/ freezer, washing machine, dishwasher, hob, extractor fan and eye level oven.
- New shower room featuring fully tiled walk-in shower with glass screen
- Lift access to all floors



**Kitchen**



**Shower room**

## Community Fee

---

£10,999 single person pa

£14,426 couple pa

Council Tax Band D £2,230.37pa

Current EPC Band C (Rating77)

Potential EPC Band B (Rating 83)

## Viewing dates

---

Please call the sales team  
to book **0117 949 4004**

### **Please note**

This apartment is sold unfurnished. Dimensions shown are maximum. Certain particulars may vary, please check with our sales team.

St Monica Trust buys back all properties at the end of each ownership period.

The seller receives back the original purchase price after deducting a reinstatement charge and any outstanding charges. The reinstatement charge covers the costs of putting the apartment back into an 'as new' condition. The cost of the reinstatement varies from £3,000 to

£10,000 dependent on the size of the apartment and the level of redecoration required.

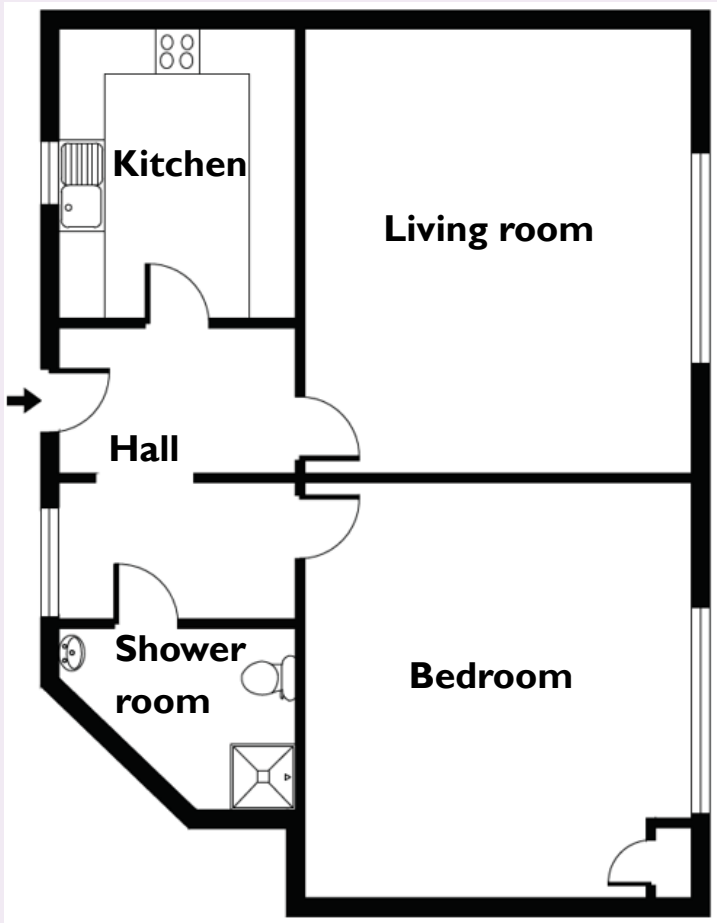
You may need to meet with the Village Manager as part of the allocations process. This will be booked at a time convenient to you.



Cote Lane  
ST MONICA TRUST

# 16 Oatley House

Cote Lane, Bristol BS9 3TN



## Living room

4.59m x 4.27m

15'1" x 14'0"

## Kitchen

3.19m x 2.60m

10'5" x 8'6"

## Bedroom

4.57m x 4.26m

15'0" x 14'0"

## Shower room

2.60m x 2.00m

8'6" x 6'7"

**TOTAL AREA: 79 SQM**

To unsubscribe please telephone  
**0117 949 4004** or email  
[sales.team@stmonicatrust.org.uk](mailto:sales.team@stmonicatrust.org.uk)



St Monica Trust **APPROVED  
OPERATOR**

