



Westbury Fields

ST MONICA TRUST

**27 Jessop Crescent**  
**One bedroom ground floor apartment**



Westbury on Trym, Bristol BS10 6TQ

**£375,000 leasehold**  
**(other charges apply)**



St Monica Trust



APPROVED  
OPERATOR



Westbury Fields  
ST MONICA TRUST

# 27 Jessop Crescent

Westbury on Trym, Bristol BS10 6TQ



## Specification

- South west facing apartment, located on the ground floor with easy-to-maintain patio garden overlooking croquet lawn
- Living room with French doors leading onto patio garden
- Hallway with airing cupboard
- Bedroom with built in cupboard and croquet lawn views
- Modern kitchen with extractor fan, hob and eye level oven and space for fridge/freezer, washing machine/dryer and dishwasher
- Upgraded modern shower room
- Constructed in 2003
- To be refurbished in late 2024

*Available November 2024*



**Kitchen**



**Shower room**

### **Community fees**

£9,028 single person per annum

£12,180 couple per annum

### **Viewings**

Please call the sales team  
to book on **0117 949 4004**

### **Council tax**

Council Tax Band B

£1,913.60 per annum

### **EPC**

Current EPC Band C (Rating 77)

Potential EPC Band C (Rating 77)

#### **Please note**

This apartment is sold unfurnished. Dimensions shown are maximum.

Certain particulars may vary, please check with our sales team.

St Monica Trust buys back all properties at the end of each ownership period.

The seller receives back the original purchase price after deducting a reinstatement charge and any outstanding charges.

The reinstatement charge covers the costs of putting the apartment back into an 'as new' condition. The cost of the reinstatement varies from £3,000 to

£10,000 dependent on the size of the apartment and the level of redecoration required.

If you express an interest you may need to meet with the Village Manager immediately after your viewing appointment.

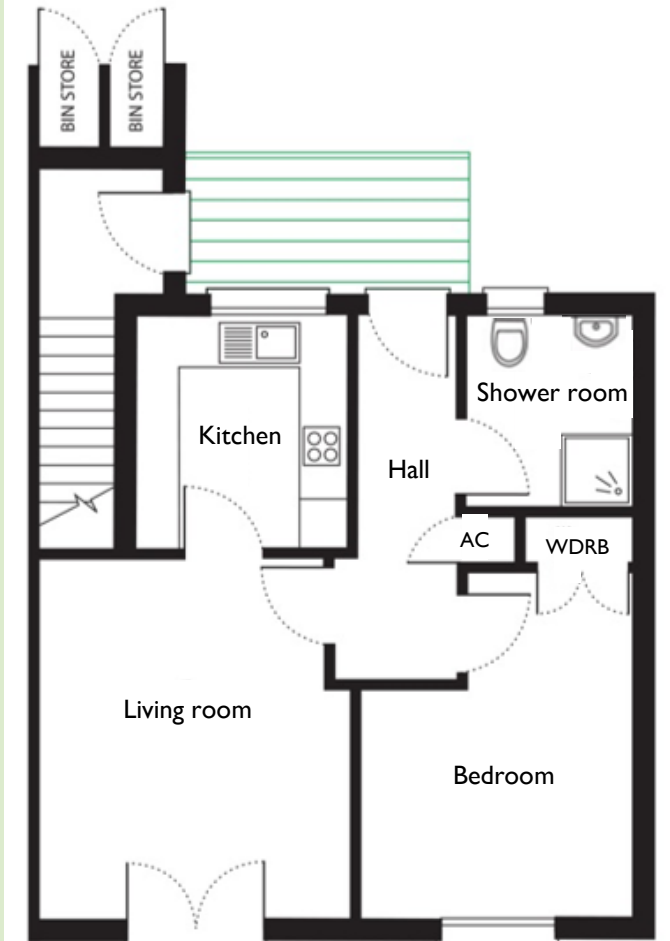


Westbury Fields

ST MONICA TRUST

# 27 Jessop Crescent

Westbury on Trym, Bristol **BS10 6TQ**



### Living room

4.10m x 3.72m

13'5" x 12'2"

### Kitchen

2.60m x 2.40m

8'6" x 7'10"

### Bedroom

4.50m x 3.30m

14'9" x 10'10"

### Shower room

2.30m x 2.17m

7'6" x 7'1"

**TOTAL AREA: 61 SQM**

To unsubscribe please telephone  
**0117 949 4004** or email  
[sales.team@stmonicastrust.org.uk](mailto:sales.team@stmonicastrust.org.uk)



St Monica Trust APPROVED  
OPERATOR