



Westbury Fields

ST MONICA TRUST

28 Jessop Crescent
Two bedroom first floor apartment



Westbury on Trym, Bristol BS10 6TQ

£375,000 leasehold
(other charges apply)



St Monica Trust



APPROVED
OPERATOR



Westbury Fields
ST MONICA TRUST

28 Jessop Crescent

Westbury on Trym, Bristol BS10 6TQ



View from apartment

Specification

- Well situated south west facing apartment close to Cricketers restaurant
- Living room with balcony overlooking the croquet lawn
- Bedroom with storage
- Second large attic bedroom
- Updated shower room
- Modern kitchen with hob, eye level oven, extractor fan, fridge/freezer, washing machine and dishwasher
- Hallway storage
- Constructed in 2003 and to be refurbished in 2024
- Awaiting grant of probate



Kitchen



Shower room

Fees and EPC

£10,349 single person pa
£13,988 couple pa 2024/25
Fees below applicable 2023/24
Council Tax Band C £2,084.65 pa
Current EPC Band C (Rating 76)
Potential EPC Band C (Rating 76)

Viewings

Please call the sales team
to book **0117 949 4004**

Please note

This apartment is sold unfurnished. Dimensions shown are maximum. Certain particulars may vary, please check with our sales team.

St Monica Trust buys back all properties at the end of each ownership period.

The seller receives back the original purchase price after deducting a reinstatement charge and any outstanding charges. The reinstatement charge covers the costs of putting the apartment back into an 'as new' condition. The cost of the reinstatement varies from £3,000 to

£10,000 dependent on the size of the apartment and the level of redecoration required.

If you express an interest you may need to meet with the Village Manager immediately after your viewing appointment.

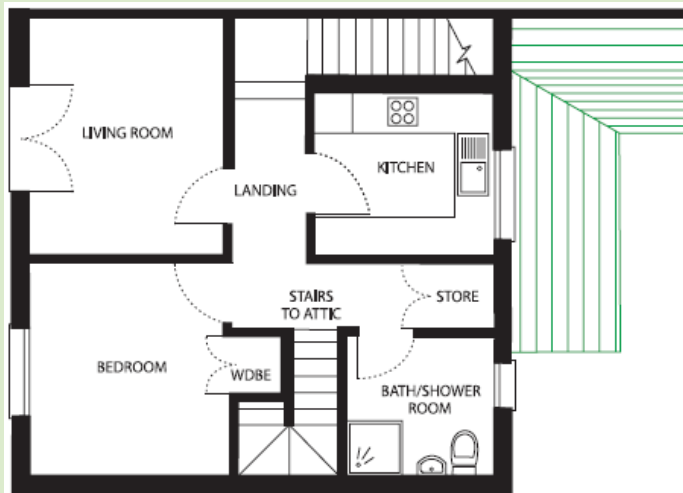


Westbury Fields

ST MONICA TRUST

28 Jessop Crescent

Westbury on Trym, Bristol BS10 6TQ



Living room

3.72m x 3.00m

12'2" x 19'10"

Kitchen

2.39m x 2.51m

7'10" x 8'2"

Bedroom

3.40m x 3.30m

11'2" x 10'10"

Shower room

2.20m x 2.17m

7'2" x 7'1"

Attic Bedroom

6.90m x 5.00m

22'7" x 16'5"

SECOND FLOOR



TOTAL AREA: 75 SQM

To unsubscribe please telephone
0117 949 4004 or email
sales.team@stmonicastrust.org.uk



St Monica Trust APPROVED
OPERATOR

