



Cote Lane

ST MONICA TRUST

29 Oatley House

One bedroom ground floor apartment



Cote Lane, Bristol BS9 3TN



St Monica Trust

£395,000 leasehold
(other charges apply)



APPROVED
OPERATOR



Cote Lane
ST MONICA TRUST

29 Oatley House

Cote Lane, Bristol BS9 3TN



Terrace access to gardens

Specification

- East facing living room with French doors opening onto terrace with access to gardens
- Separate WC
- One bedroom with modern en-suite shower room
- Modern kitchen with integrated hob, eye-level oven, extractor fan and space for a fridge/freezer and washing machine
- Constructed in 1920, to be refurbished in 2023
- Awaiting grant of probate



Typical kitchen



Typical shower room

Community fee

£10,008 single person pa

£12,824 per couple pa

Council Tax Band C £2,084.65 pa

Current EPC Band C (Rating 80)

Potential EPC Band C (Rating 80)

Viewing dates

Please call the sales team
to book **0117 949 4004**

Please note

This apartment is sold unfurnished. Dimensions shown are maximum. Certain particulars may vary, please check with our sales team.

St Monica Trust buys back all properties at the end of each ownership period.

The seller receives back the original purchase price after deducting a reinstatement charge and any outstanding charges.

The reinstatement charge covers the costs of putting the apartment back into an 'as new' condition. The cost of the reinstatement

varies from £3,000 to £10,000 dependent on the size of the apartment and the level of redecoration required.

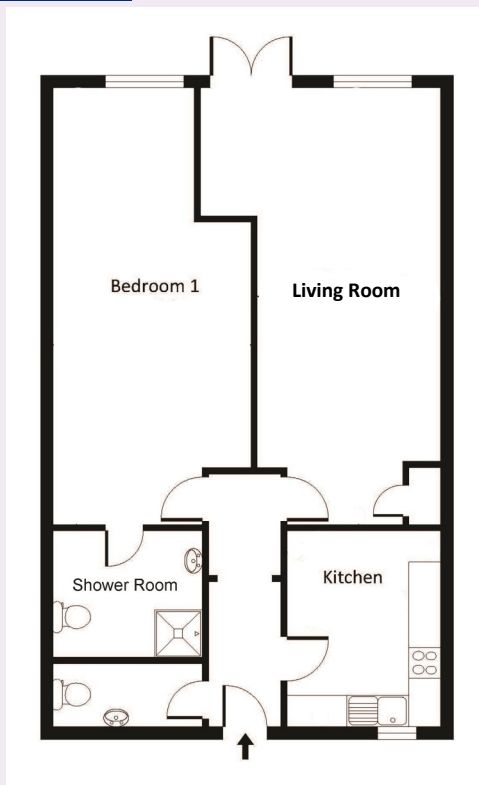
If you express an interest you may need to meet with the Village Manager immediately after your viewing appointment.



Cote Lane
ST MONICA TRUST

29 Oatley House

Cote Lane, Bristol BS9 3TN



Living room

6.91m x 2.90m

22'8" x 19'6"

Kitchen

3.10m x 2.43m

10'2" x 8'10"

Bedroom 1

6.61m x 3.13m

22'8" x 10'3"

To unsubscribe please telephone
0117 949 4004 or email
sales.team@stmonicastrust.org.uk



St Monica Trust APPROVED
OPERATOR

