



Westbury Fields

ST MONICA TRUST

3 Jessop Crescent

Two bedroom apartment with patio garden



Westbury on Trym, Bristol BS10 6TQ



St Monica Trust

£410,000 leasehold
(other charges apply)



APPROVED
OPERATOR



Westbury Fields
ST MONICA TRUST

3 Jessop Crescent

Westbury on Trym, Bristol BS10 6TQ



View from apartment

Specification

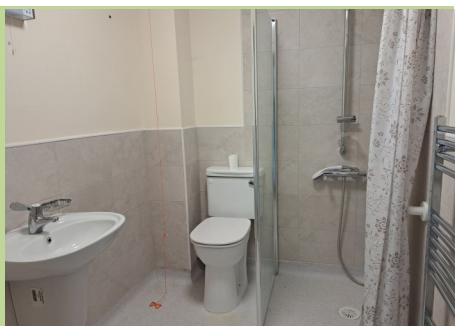
- South east facing apartment on the ground floor overlooking the cricket field
- Spacious living room with French doors opening onto patio garden
- Main bedroom with lovely cricket field views
- Second bedroom/study with storage
- Upgraded shower room
- Modern kitchen with extractor fan, hob and eye level oven and space for fridge/freezer, washing machine/dryer and dishwasher
- Constructed in 2003
- To be refurbished in 2025

Available April 2024

This will fall under the terms of the St Monica Trust updated lease



Kitchen



Shower room

Service charge

£9,344 single person per annum

£12,606 couple per annum

Viewings

Please call the sales team
to book on **0117 949 4004**

Council tax

Council Tax Band C

£2,296.79 per annum

EPC

Current EPC Band C (Rating 80)

Potential EPC Band C (Rating 80)

Please note

This apartment is sold unfurnished. Dimensions shown are maximum. Certain particulars may vary, please check with our sales team. If you express an interest you may need to meet with the Village Manager as part of the allocations process.

This will be booked at a time convenient to your.

Ending your occupation of a property

When you surrender your lease the Trust will buy your property back and return to you the amount of your original

capital payment less any outstanding charges and your surrender fee. Please refer to the Guide to Fees document for a worked example.

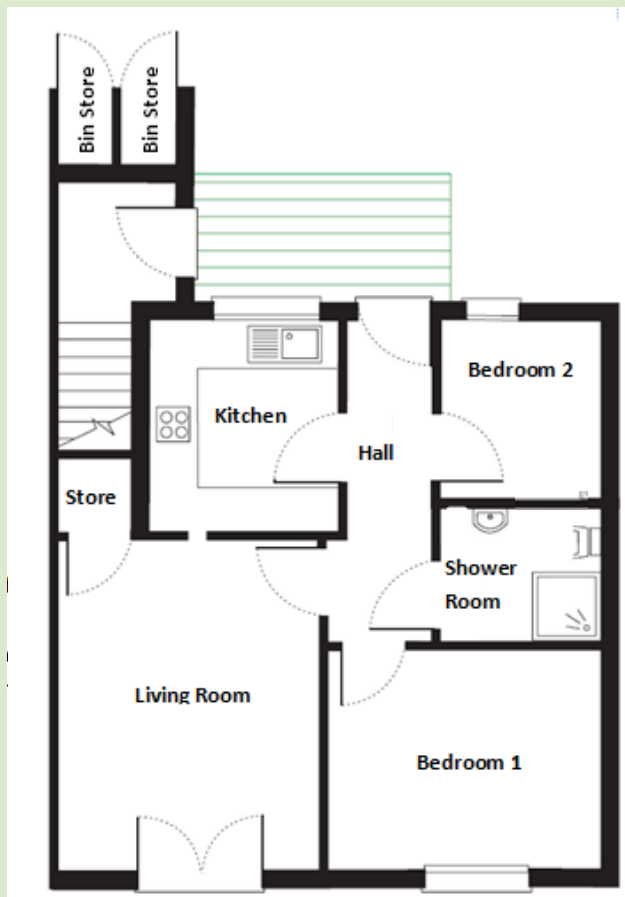


Westbury Fields

ST MONICA TRUST

3 Jessop Crescent

Westbury on Trym, Bristol **BS10 6TQ**



Living room

4.34m x 3.44m

14'3" x 11'3"

Kitchen

2.77m x 2.46m

9'1" x 8'1"

Bedroom 1

3.58m x 3.00m

11'9" x 9'10"

Bedroom 2

2.40m x 2.10m

7'10" x 6'10"

Shower

2.10m x 1.60m

6'10" x 5'3"

TOTAL AREA: 61 SQM

To unsubscribe please telephone
0117 949 4004 or email
sales.team@stmonicastrust.org.uk



St Monica Trust APPROVED
OPERATOR

