



Cote Lane

ST MONICA TRUST

3 Westfield House, Cote Lane

Large one bedroom apartment with balcony



St Monica Trust

Cote Lane, Bristol BS9 3TJ

£3,885 Rental pcm



APPROVED
OPERATOR



Cote Lane
ST MONICA TRUST

3 Westfield House

Cote Lane, Bristol BS9 3TJ



[View from apartment](#)

Specification

- South west facing lower ground floor apartment
- Living room opening onto balcony with railings
- Access to communal gardens close by
- Larger bedroom with plenty of fitted storage, suitable for couples
- Hallway with fitted storage, including airing cupboard
- Shower room
- Modern kitchen with hob, extractor fan and eye level oven (space for fridge freezer)
- Constructed in 1985—to be redecorated in 2025

Current EPC Band - TBA | Potential EPC Band - TBA



Example of kitchen



Library

Rental package includes

- All utility bills, council tax and community fees
- Daily three-course lunch
- Laundry and housekeeping
- 24 hour emergency care and support and porter security
- Please note, telephone and broadband costs are not included in the monthly rental charge

Viewings

Monday 10 February

Thursday 13 February

Priority will be given to couples due to being a larger apartment.

If you are interested in single occupancy you will be placed on the reserve list.

Please note

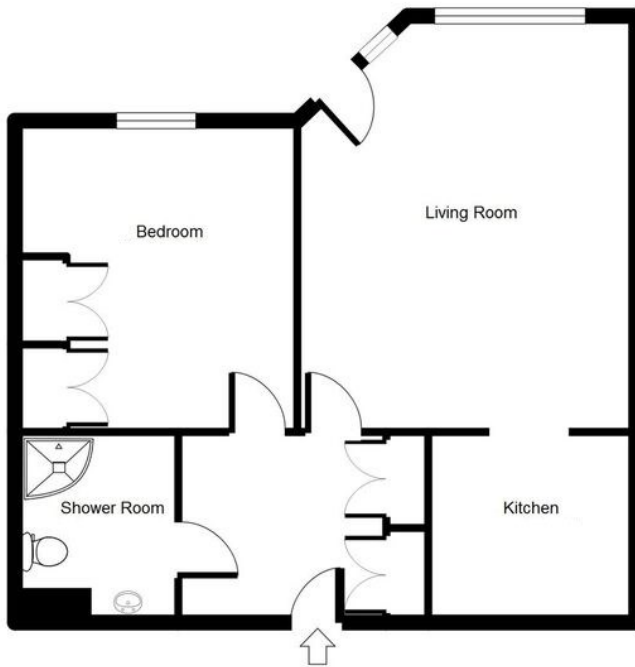
You may need to meet with the Village Manager as part of the allocation process. This will be booked for Thursday 13 February.



Cote Lane
ST MONICA TRUST

3 Westfield House

Cote Lane, Bristol BS9 3TJ



Living room

5.2m x 4.3m

17'2" x 14'0"

Bedroom

3.9m x 3.6m

12'10" x 11'8"

Kitchen

2.6 x 2.4m

8'7" x 7'10"

Shower room

2.4m x 2.1m

7'10" x 6'9"

To unsubscribe please telephone
0117 949 4004 or email
sales.team@stmonicastrust.org.uk



St Monica Trust APPROVED
OPERATOR

