



Westbury Fields

ST MONICA TRUST

30 Jessop Crescent

Two bedroom apartment with private balcony



Westbury on Trym, Bristol BS10 6TQ

£405,000 leasehold
(other charges apply)



St Monica Trust



APPROVED
OPERATOR



Westbury Fields
ST MONICA TRUST

30 Jessop Crescent

Westbury on Trym, Bristol BS10 6TQ



View from apartment

Specification

- South west facing apartment, located on the first floor close to the Cricketers restaurant and main entrance
- Living room opening onto balcony overlooking croquet lawn
- Large modern kitchen with extractor fan, hob, eye level oven, fridge/ freezer, washing machine and dishwasher
- Main bedroom with updated ensuite shower room with access to hallway
- Second bedroom with storage
- Landing with storage
- To be refurbished in 2024
- Constructed in 2003

Available June 2024

Awaiting grant of probate



Typical Kitchen



Typical Shower room

Community fees

£10,349 single person per annum

£13,988 couple per annum

Viewings

Please call the sales team
to book on **0117 949 4004**

Council tax

Council Tax Band C

£2,084.65 per annum

EPC

Current EPC Band C (78)

Potential EPC Band C(79)

Please note

This apartment is sold unfurnished. Dimensions shown are maximum.

Certain particulars may vary, please check with our sales team.

St Monica Trust buys back all properties at the end of each ownership period.

The seller receives back the original purchase price after deducting a reinstatement charge and any outstanding charges.

The reinstatement charge covers the costs of putting the apartment back into an 'as new' condition. The cost of the reinstatement varies from £3,000 to

£10,000 dependent on the size of the apartment and the level of redecoration required.

If you express an interest you may need to meet with the Village Manager immediately after your viewing appointment.

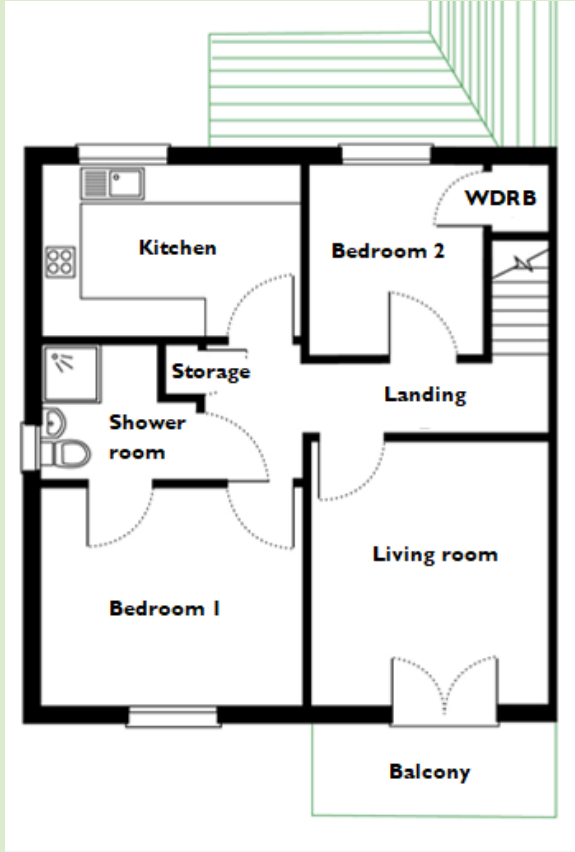


Westbury Fields

ST MONICA TRUST

30 Jessop Crescent

Westbury on Trym, Bristol **BS10 6TQ**



Living room

4.00m x 3.80m

13'1" x 12'5"

Kitchen

3.50m x 2.70m

11'5" x 8'10"

Bedroom 1

4.00m x 3.50m

13'1" x 11'5"

Bedroom 2

3.00m x 3.00m

9'10" x 9'10"

Shower

2.37m x 2.10m

7'9" x 6'10"

TOTAL AREA: 78 SQM

To unsubscribe please telephone
0117 949 4004 or email
sales.team@stmonicastrust.org.uk



St Monica Trust **APPROVED OPERATOR**

