



Cote Lane

ST MONICA TRUST

32 Oatley House

Spacious one bedroom Ground floor apartment
with direct access to parklands



St Monica Trust

Cote Lane, Bristol BS9 3TN

£595,000 leasehold
(other charges apply)



APPROVED
OPERATOR



Cote Lane
ST MONICA TRUST

32 Oatley House

Cote Lane, Bristol 3TN



Spacious living dining room with french doors to parklands

Specification

- South west facing living dining room with access to and views over the parklands
- Located on the floor of the Chapel, main hall, swimming pool and gym
- Located conveniently to Oatley House exit leading to bus stop
- Featuring high ceilings and large picturesque bay window
- Generous living room with ample space for separate dining area
- One double bedroom
- Kitchen with extractor fan, hob and eye level oven
- Spacious entrance hall with space suitable for separate office area
- Feature fireplace in living room (electric fire not included)
- To be refurbished in 2024
- Constructed in 1920



Shower room



Entrance hall

Community fees 2024/25

£12,591 single person per annum

£16,292 couple per annum

Council tax 2024/25

Council Tax Band D

£2,460.32 per annum

EPC

Current EPC Band C (Rating 78)

Potential EPC Band B (Rating 85)

Viewings

Please call the sales team
to book on **0117 949 4004**



View from apartment

Please note

This apartment is sold unfurnished. Dimensions shown are maximum.

Certain particulars may vary, please check with our sales team.

St Monica Trust buys back all properties at the end of each ownership period.

The seller receives back the original purchase price after deducting a reinstatement charge and any outstanding charges.

The reinstatement charge covers the costs of putting the apartment back into an 'as new' condition. The cost of the reinstatement varies from £3,000 to

£10,000 dependent on the size of the apartment and the level of redecoration required.

If you express an interest you may need to meet with the Village Manager immediately after your viewing appointment.

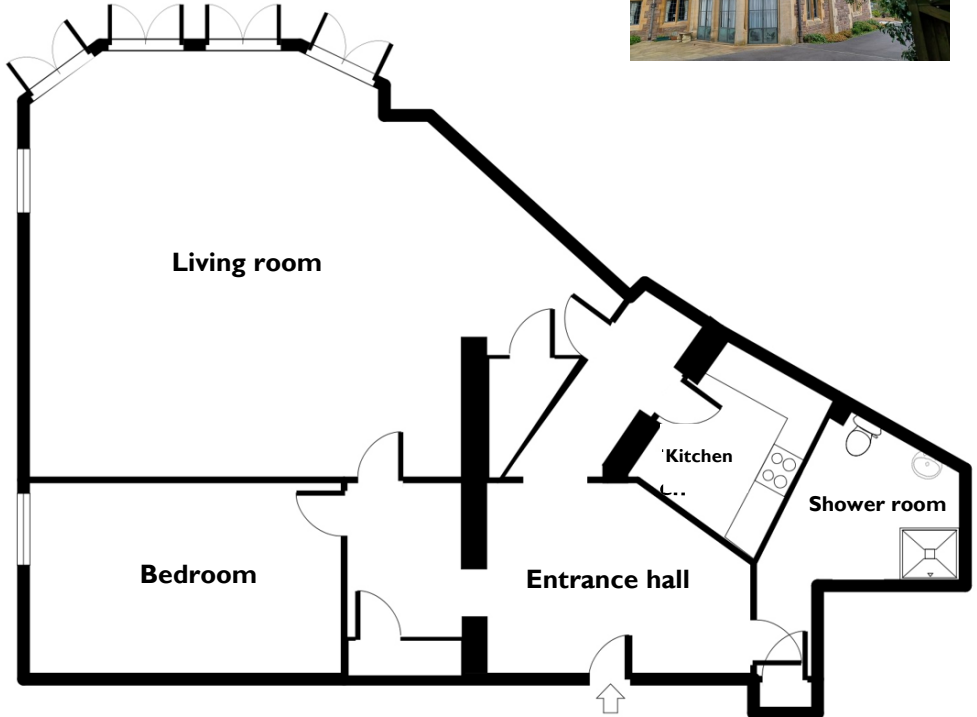


Cote Lane

ST MONICA TRUST

32 Oatley House

Cote Lane,
Bristol BS9



Living room
9.42m x 6.98m
30'11" x 22'11"

Bedroom
4.84m x 3.06m
15'11" x 10'1"

Kitchen
3.52m x 1.97m
11'7" x 6'6"

Shower room
3.57m x 2.94m
11'9" x 9'8"

TOTAL AREA: 130 SQM

To unsubscribe please telephone
0117 949 4004 or email
sales.team@stmonicastrust.org.uk



St Monica Trust **APPROVED
OPERATOR**

