



Cote Lane

ST MONICA TRUST

34 Oatley House

One bedroom top floor apartment
with direct lift access and picturesque views



St Monica Trust

Cote Lane, Bristol BS9 3TN

£460,000 leasehold
(other charges apply)



APPROVED
OPERATOR



Oatley House

Cote Lane, Bristol 3TN



View from apartment

Specification

- West facing, located on the top floor with far reaching views over looking the croquet lawn, hilltops and affording splendid sunsets
- Direct lift access close to the main entrance of Oatley House
- Located close to the restaurant and main entrance
- Generous sized double bedroom with separate dressing room, walk in wardrobe
- Spacious living room with feature fireplace
- Kitchen with extractor fan, hob and eye level oven (white goods not provided)
- Generous sized shower room
- Spacious entrance hallway
- To be refurbished in 2024
- Constructed in 1920

Available July 2024



Bedroom



Living room

Community fees 2024/25

£10,568 single person per annum

£13,542 couple per annum

Council tax 2024/25

Council Tax Band D

£2,460.32 per annum

EPC

Current EPC Band E (Rating 51)

Potential EPC Band C (Rating 77)

Viewings

Please call the sales team
to book on **0117 949 4004**



Shower room

Please note

This apartment is sold unfurnished. Dimensions shown are maximum. Certain particulars may vary, please check with our sales team.

St Monica Trust buys back all properties at the end of each ownership period.

The seller receives back the original purchase price after deducting a reinstatement charge and any outstanding charges. The reinstatement charge covers the costs of putting the apartment back into an 'as new' condition. The cost of the reinstatement varies from £3,000 to

£10,000 dependent on the size of the apartment and the level of redecoration required.

If you express an interest you may need to meet with the Village Manager immediately after your viewing appointment.



Cote Lane

ST MONICA TRUST

34 Oatley House

Cote Lane, Bristol BS9 3 TN

Living room

4.80m x 3.15m

15'9" x 10'4"

Bedroom

5.23m x 3.15m

17'2" x 10'4"

Dressing room

3.15m x 2.26m

10'4" x 7'5"

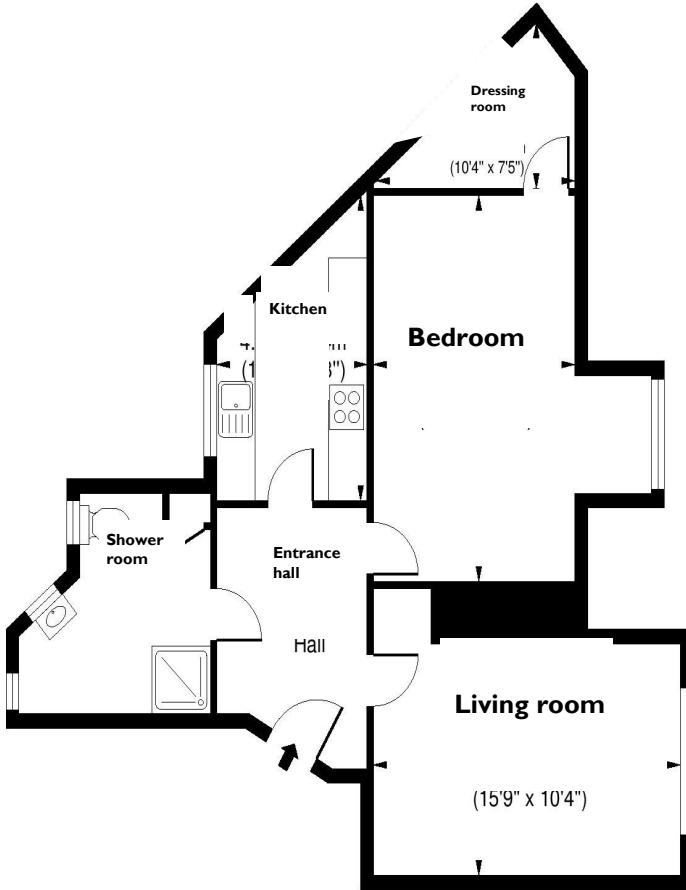
Kitchen

4.15m x 2.34m

13'7" x 7'8"

TOTAL AREA:

72 SQ M



To unsubscribe please telephone
0117 949 4004 or email
sales.team@stmonicastrust.org.uk



St Monica Trust **APPROVED
OPERATOR**

