



Cote Lane

ST MONICA TRUST

40 Oatley House

First floor one bedroom apartment



Cote Lane, Bristol BS9 3TN

£450,000 leasehold
(other charges apply)



St Monica Trust



APPROVED
OPERATOR



Cote Lane

40 Oatley House

Cote Lane, Bristol BS9 3TN



View from apartment

Specification

- South facing living room enjoying views of the gardens and parkland
- One bedroom with lovely views
- Modern shower room features fully tiled walk in shower
- Constructed in 1925
- Redecorated in 2023
- Modern kitchen with washing machine, fridge/freezer, dishwasher, hob extractor and eye level oven



Kitchen



Shower room

Community fee

£10,008 single person pa

£12,824 couple pa

Council Tax Band D £2,345.24pa

Current EPC Band D (Rating 56)

Potential EPC Band D (Rating 64)

Viewing dates

Please call the sales team
to book **0117 949 4004**

Please note

This apartment is sold unfurnished. Dimensions shown are maximum. Certain particulars may vary, please check with our sales team.

St Monica Trust buys back all properties at the end of each ownership period.

The seller receives back the original purchase price after deducting a reinstatement charge and any outstanding charges. The reinstatement charge covers the costs of putting the apartment back into an 'as new' condition. The cost of the reinstatement varies from £3,000 to

£10,000 dependent on the size of the apartment and the level of redecoration required.

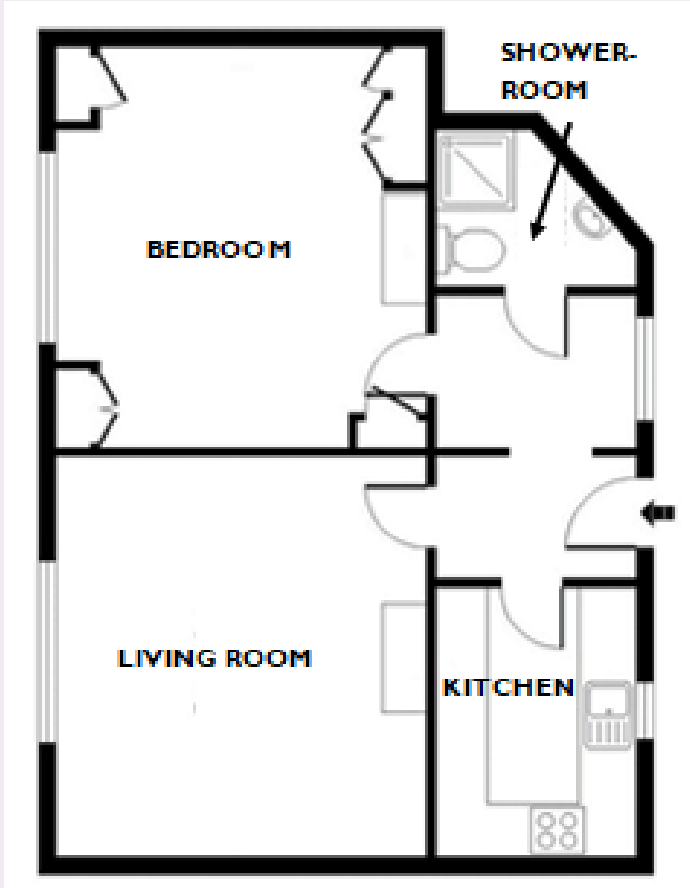
If you express an interest you may need to meet with the Village Manager immediately after your viewing appointment.



Cote Lane
ST MONICA TRUST

40 Oatley House

Cote Lane, Bristol BS9 3TN



Living room

4.59m x 4.25m

15'1" x 13'11"

Kitchen

3.12m x 2.31m

10'3" x 7'7"

Bedroom

4.59m x 4.25m

15'1" x 13'11"

To unsubscribe please telephone
0117 949 4004 or email
sales.team@stmonicatrust.org.uk



St Monica Trust APPROVED
OPERATOR

