



Cote Lane

ST MONICA TRUST

52 Oatley House

One bedroom first floor apartment



Cote Lane, Bristol BS9 3TN

£450,000 leasehold
(other charges apply)



St Monica Trust



APPROVED
OPERATOR



Cote Lane
ST MONICA TRUST

52 Oatley House

Cote Lane, Bristol BS9 3TN



Parkland Grounds

Specification

- Constructed in 1920
- Refurbished in 2023
- South facing living room overlooking gardens
- Spacious bedroom with garden views
- New kitchen and shower room
- Updated kitchen with eye level oven, hob, extractor fan. Appliances not provided
- Lift access to first floor
- Immediately available



Kitchen



Shower Room

Community Fee

£10,008 single person pa

£12,824 couple pa

Council Tax Band D £2,345.24pa

Current EPC Band D (Rating 60)

Potential EPC Band D (Rating 65)

Viewing dates

Please call the sales team
to book **0117 949 4004**

Please note

This apartment is sold unfurnished. Dimensions shown are maximum.

Certain particulars may vary, please check with our sales team.

St Monica Trust buys back all properties at the end of each ownership period.

The seller receives back the original purchase price after deducting a reinstatement charge and any outstanding charges.

The reinstatement charge covers the costs of putting the apartment back into an 'as new' condition. The cost of the reinstatement varies from £3,000 to

£10,000 dependent on the size of the apartment and the level of redecoration required.

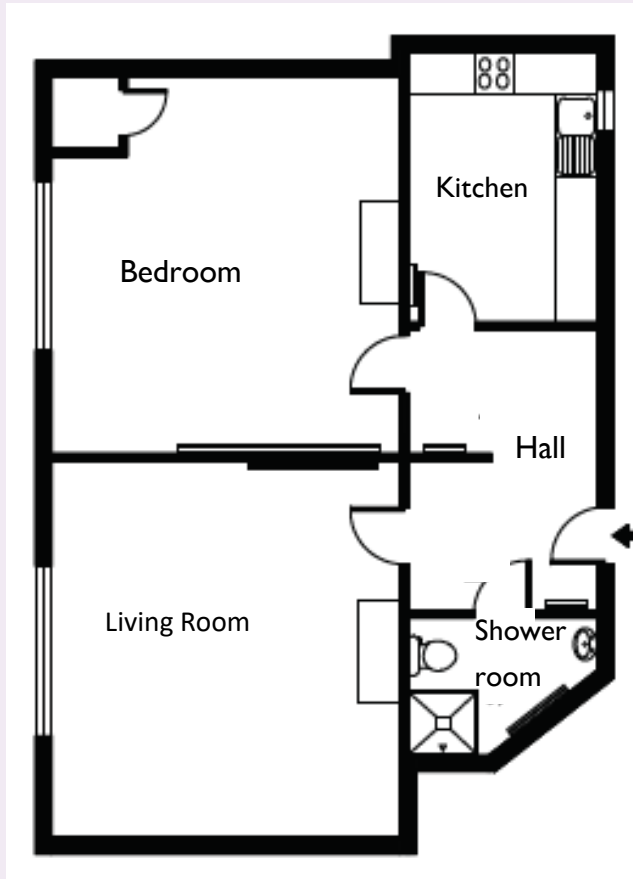
You may need to meet with the Village Manager as part of the allocations process. This will be booked at a time convenient to you.



Cote Lane
ST MONICA TRUST

52 Oatley House

Cote Lane, Bristol BS9 3TN



Living room

4.61m x 4.26m

15'1" x 43'0"

Kitchen

3.30m x 2.31m

10'10" x 7'7"

Bedroom

4.61m x 4.26m

15'1" x 14'0"

Shower room

2.10m x 1.68m

6'11" x 5'6"

TOTAL AREA: 78 SQM

To unsubscribe please telephone
0117 949 4004 or email
sales.team@stmonicatrust.org.uk



St Monica Trust **APPROVED
OPERATOR**

