



Cote Lane

ST MONICA TRUST

57 Westfield House, Cote Lane One bedroom apartment with balcony



Cote Lane, Bristol BS9 3TJ

£2,953.00 Rental pcm



St Monica Trust



APPROVED
OPERATOR



Cote Lane
ST MONICA TRUST

57 Westfield House

Cote Lane, Bristol BS9 3TJ



View from apartment

Specification

- South west facing top floor apartment with lovely views
- Living room opening onto private balcony with room for bistro set or bench and a few plant pots
- Bedroom has good sized fitted wardrobe with rail and shelf
- Hallway also has good sized fitted cupboard with rail and shelf
- Shower room with level access shower and airing cupboard
- Modern kitchen with hob, extractor fan and eye level oven,. Space space for fridge freezer
- Constructed in 1985

Current EPC Band C (Rating 76) | Potential EPC Band C (Rating 78)



Kitchen



Library

Rental package includes

- All utility bills, council tax and community fees
- Daily three-course lunch
- Laundry and housekeeping
- 24 hour emergency care and support and porter security
- Please note, telephone and broadband costs are not included in the monthly rental charge

Viewings

Please call the sales team to book on **0117 949 4004**



Please note

You may need to meet with the Village Manager as part of the allocation process. This will be booked at a time convenient to you.

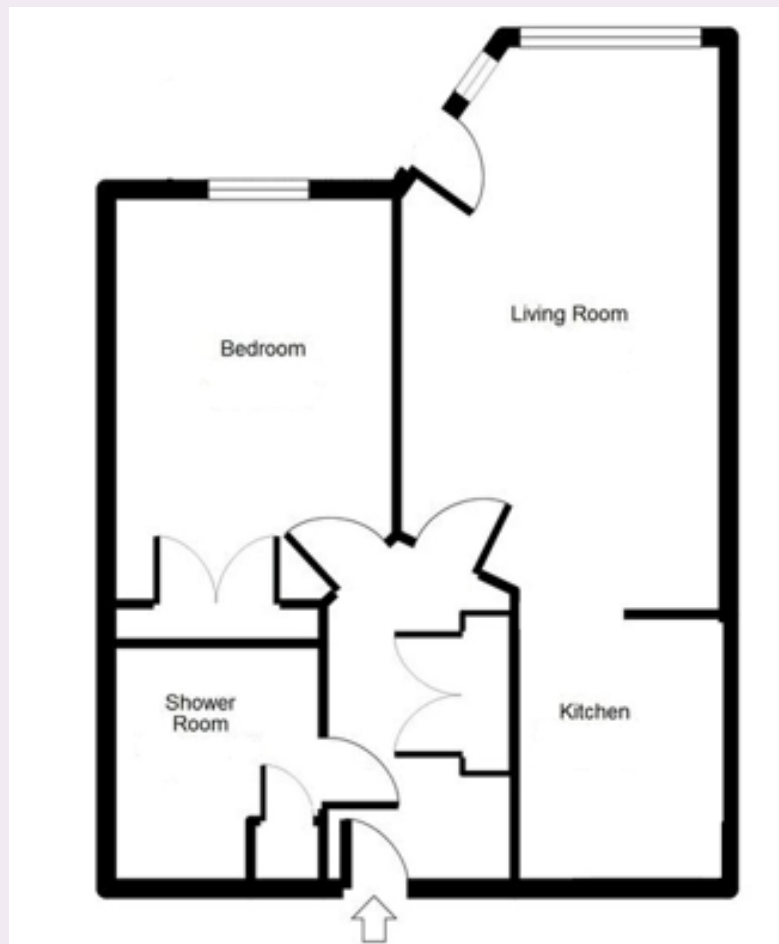


Cote Lane

ST MONICA TRUST

57 Westfield House

Cote Lane, Bristol BS9 3TJ



Living room

5.60m x 3.20m

18'5" x 10'7"

Bedroom

3.72m x 2.84m

12'3" x 9'4"

Kitchen

2.80m x 2.13m

9'1" x 7'0"

Shower room

2.40m x 2.10m

7'11" x 6'11"

To unsubscribe please telephone
0117 949 4004 or email
sales.team@stmonicastrust.org.uk



St Monica Trust **APPROVED OPERATOR**

