



Westbury Fields

ST MONICA TRUST

6 Jessop Crescent

Two bedroom first floor apartment



Westbury on Trym, Bristol BS10 6TQ

£410,000 leasehold
(other charges apply)



St Monica Trust



APPROVED
OPERATOR



Westbury Fields
ST MONICA TRUST

6 Jessop Crescent

Westbury on Trym, Bristol BS10 6TQ



View from apartment

Specification

- Well situated south east facing apartment
- Ground floor entrance with staircase/stairlift leading to first floor apartment
- Living room with balcony overlooking cricket field
- Spacious main bedroom with cricket ground views
- Second bedroom with storage
- Hallway with storage
- Good size kitchen with eye level oven, hob, extractor fan and space for fridge/freezer, washing machine and dishwasher
- Constructed in 2003, to be refurbished in 2024



Kitchen



Shower room

Fees and EPC

£10,349 single person pa

£13,988 couple pa

Council Tax Band C £2,186.95pa

Current EPC Band C (Rating 77)

Potential EPC Band C (Rating 80)

Viewing dates

Please call the sales team
to book **0117 949 4004**

Please note

This apartment is sold unfurnished. Dimensions shown are maximum.

Certain particulars may vary, please check with our sales team.

St Monica Trust buys back all properties at the end of each ownership period.

The seller receives back the original purchase price after deducting a reinstatement charge and any outstanding charges.

The reinstatement charge covers the costs of putting the apartment back into an 'as new' condition. The cost of the reinstatement varies from £3,000 to

£10,000 dependent on the size of the apartment and the level of redecoration required.

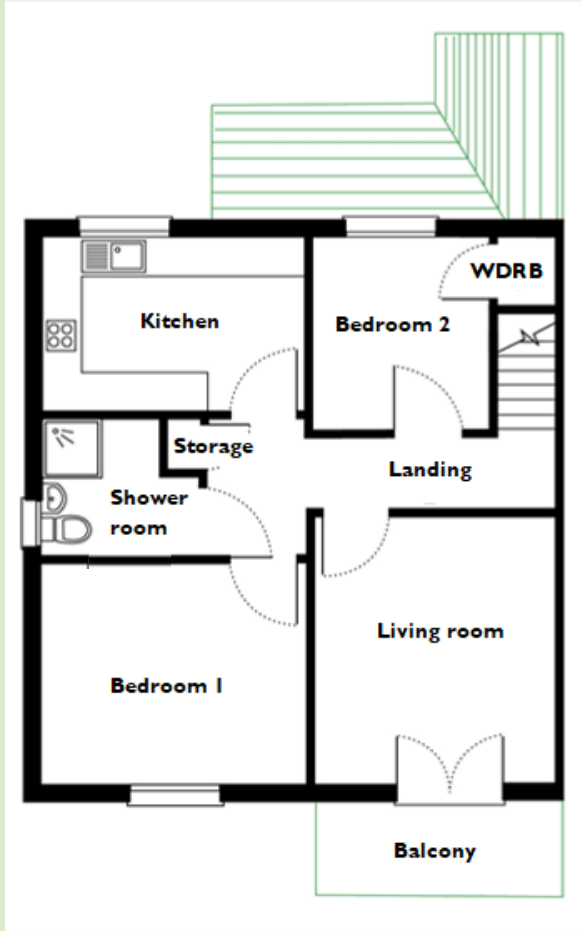
If you express an interest you may need to meet with the Village Manager immediately after your viewing appointment.



Westbury Fields
ST MONICA TRUST

6 Jessop Crescent

Westbury on Trym, Bristol BS10 6TQ



Living room

4.00m x 3.80m

13'1" x 12'5"

Kitchen

3.50m x 2.70m

11'5" x 8'10"

Bedroom 1

4.00m x 3.50m

13'1" x 11'5"

Bedroom 2

3.00m x 3.00m

9'10" x 9'10"

Shower room

2.37m x 2.10m

7'9" x 6'10"

TOTAL AREA: 78 SQM

To unsubscribe please telephone
0117 949 4004 or email
sales.team@stmonicastrust.org.uk



St Monica Trust APPROVED
OPERATOR

