



Cote Lane
ST MONICA TRUST

8 Oatley House

Spacious one bedroom first floor apartment
with feature bay windows



Cote Lane, Bristol BS9 3TN

£555,000 leasehold
(other charges apply)



St Monica Trust



APPROVED
OPERATOR



Cote Lane
ST MONICA TRUST

8 Oatley House

Cote Lane, Bristol BS9 3TN



Living room views

Specification

- Spacious apartment located in 'the tower' with wonderful views of the grounds, croquet lawn and St. Monica Court.
- Close to the restaurant and main entrance
- Lift access to first floor adjacent to the apartment
- Featuring high ceilings and large bay feature windows
- Spacious living room with space for dining area and office area
- Spacious bedroom with generous sized storage cupboard
- Kitchen with extractor fan, hob and eye level oven
- Modern shower room
- To be refurbished in 2024
- Constructed in 1920

Awaiting grant of probate



Bedroom



Shower room

Community fees *24/25*

£11,615 single person per annum

£15,234 couple per annum

Council tax *24/25*

Council Tax Band D

£2,460.32 per annum

EPC

Current EPC Band D (Rating 57)

Potential EPC Band C (Rating 73)

Viewings

Please call the sales team
to book on **0117 949 4004**



Hallway and landing

Please note

This apartment is sold unfurnished. Dimensions shown are maximum. Certain particulars may vary, please check with our sales team.

St Monica Trust buys back all properties at the end of each ownership period.

The seller receives back the original purchase price after deducting a reinstatement charge and any outstanding charges. The reinstatement charge covers the costs of putting the apartment back into an 'as new' condition. The cost of the reinstatement varies from £3,000 to

£10,000 dependent on the size of the apartment and the level of redecoration required.

If you express an interest you may need to meet with the Village Manager immediately after your viewing appointment.

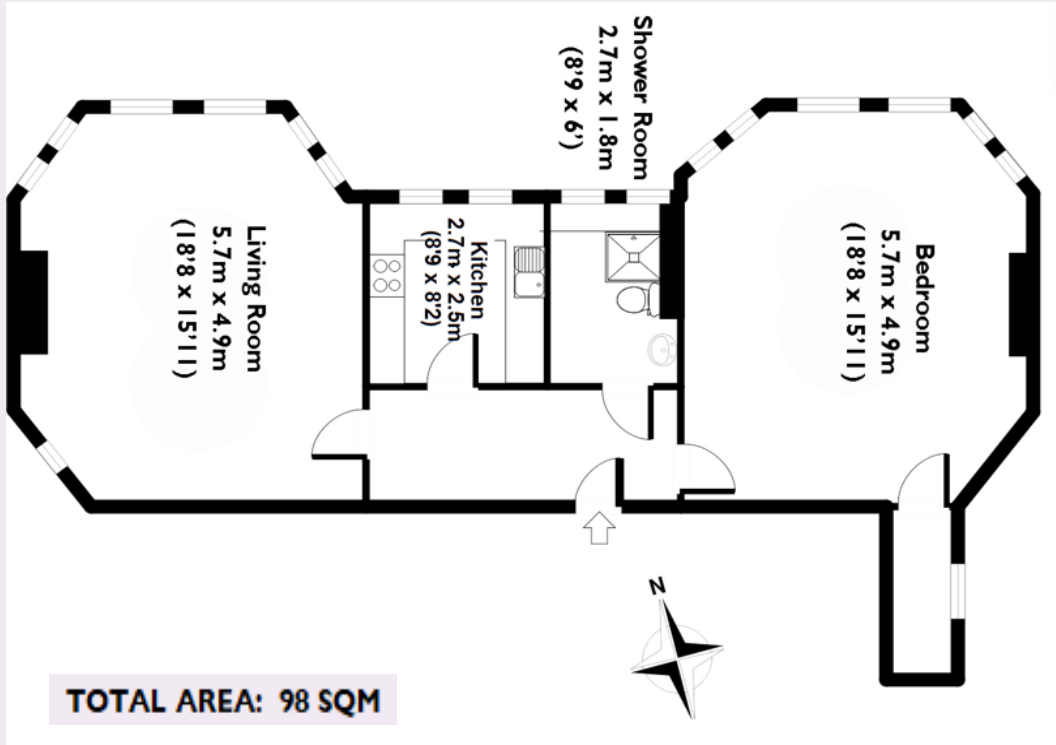


Cote Lane

ST MONICA TRUST

8 Oatley House

Cote Lane, Bristol BS9 3TN



Living room

5.7m x 4.9m
18'18" x 15'11"

Bedroom

5.7m x 4.9m
18'18" x 15'11"

Kitchen

2.7m x 2.5m
8'9" x 8'2"

Shower room

2.7m x 1.8m
8'9" x 6'0"

To unsubscribe please telephone

0117 949 4004 or email

sales.team@stmonicastrust.org.uk



St Monica Trust **APPROVED
OPERATOR**

