



Cote Lane

ST MONICA TRUST

8 Westfield House

One bedroom ground floor apartment
with private patio



Cote Lane, Bristol BS9 3TJ

Rental £2,475 pcm



St Monica Trust



APPROVED
OPERATOR



Cote Lane
ST MONICA TRUST

8 Westfield House

Cote Lane, Bristol BS9 3TJ



Westfield House gardens

Specification

- South west facing lower ground floor apartment
- Living room opening onto private patio
- Bedroom with fitted storage
- Hallway with fitted storage
- Shower room with airing cupboard
- Modern kitchen with hob, extractor fan and eye level oven (space for fridge freezer)
- To be refurbished
- Constructed in 1985
- Available February 2024

Current EPC Band C (Rating 73) | Potential EPC Band C (Rating 75)



Kitchen



Croquet lawn

Rental package includes

- All utility bills, council tax and community fees
- Daily three-course lunch
- Laundry and housekeeping
- 24 hour emergency care and support and porter security
- Please note, telephone and broadband costs are not included in the monthly rental charge

Viewings

Please call the sales team to book **0117 949 4004**

Please note

You may need to meet with the Village Manager as part of the allocation process. This will be booked at a time convenient to you.

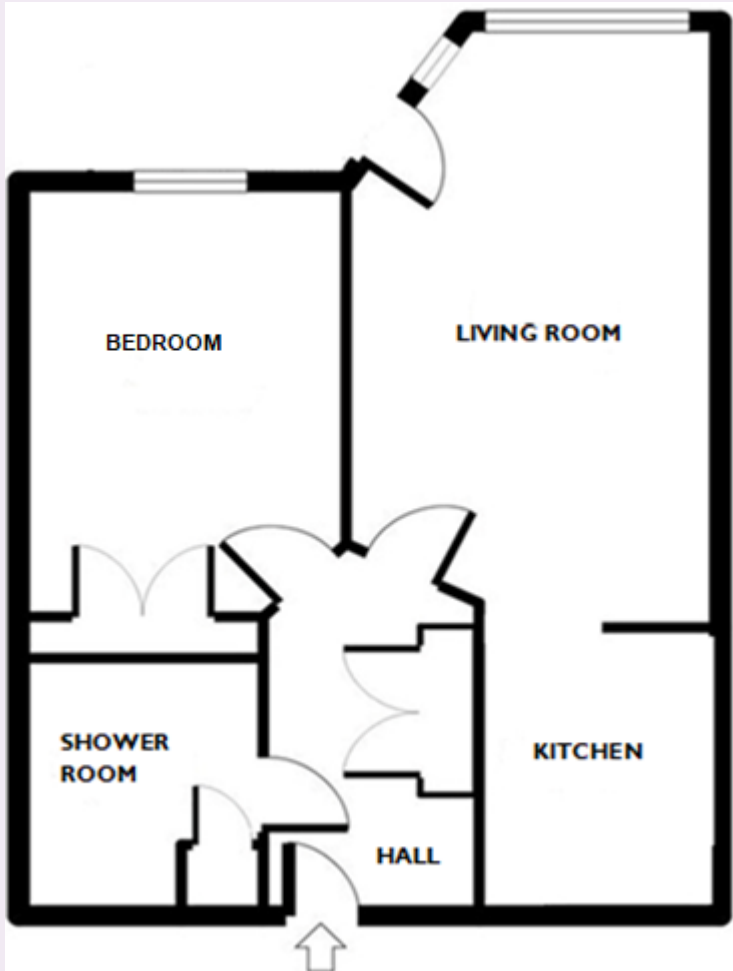


Cote Lane

ST MONICA TRUST

8 Westfield House

Cote Lane, Bristol BS9 3TJ



Living room

5.81m x 3.22m

19'1" x 10'7"

Bedroom

3.73m x 2.74m

12'3" x 9'2"

Kitchen

2.71m x 2.10m

8'11" x 6'11"

Shower room

2.41m x 2.10m

7'11" x 6'11"

To unsubscribe please telephone
0117 949 4004 or email
sales.team@stmonicastrust.org.uk



St Monica Trust APPROVED
OPERATOR

