



Monica Wills House

ST MONICA TRUST

87 Monica Wills House **One bedroom apartment** **with balcony on the third floor**



Bedminster, Bristol BS3 3NJ

£275,000 leasehold
(other charges apply)



St Monica Trust



APPROVED
OPERATOR



Monica Wills House

ST MONICA TRUST

87 Monica Wills House

Bedminster, Bristol BS3 3NJ



View from apartment

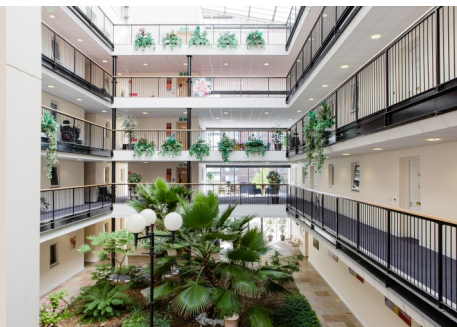
Specification

- West facing, located on the third floor with views over the Clifton Suspension Bridge
- Spacious living room opening onto a balcony
- One double bedrooms, one ensuite
- New kitchen with extractor fan, hob and eye level oven
- New shower room
- Generous hallway with storage
- Newly refurbished
- Constructed in 2006

This will fall under the terms of the St Monica Trust updated lease



Typical Kitchen



Atrium

Service charge

£5,741 single person per annum

£7,033 couple per annum

Viewings

Please call the sales team

to book on **0117 949 4004**

Council tax

Council Tax Band A

£1,722.60per annum

EPC

Current EPC TBC

Potential EPC TBC

Please note

This apartment is sold unfurnished. Dimensions shown are maximum.

Certain particulars may vary, please check with our sales team. You may need to meet with the village manager as part of the allocations process.

This will be booked at a time convenient to you.

Ending your occupation of a property

When you surrender your lease the Trust will buy your property back and

return to you the amount of your original capital payment less any outstanding charges and your surrender fee. Please refer to the Guide to Fees document for a worked example

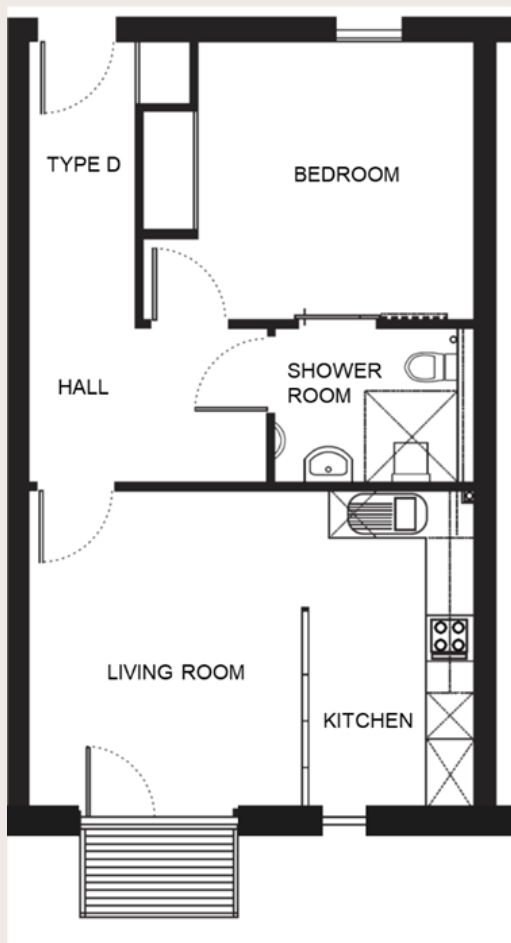


Monica Wills House

ST MONICA TRUST

87 Monica Wills House

Bedminster, Bristol BS3 3NJ



Living room

4.08m x 3.5m

13'3" x 11'4"

Kitchen

4.08m x 2.1m

13'3" x 6'8"

Bedroom

4.25m x 3.6m

13'9" x 11'8"

Shower room

2.35m x 2.0m

7'7" x 6'5"

TOTAL AREA: 56 SQM

To unsubscribe please telephone
0117 949 4004 or email
sales.team@stmonicastrust.org.uk



St Monica Trust APPROVED
OPERATOR

